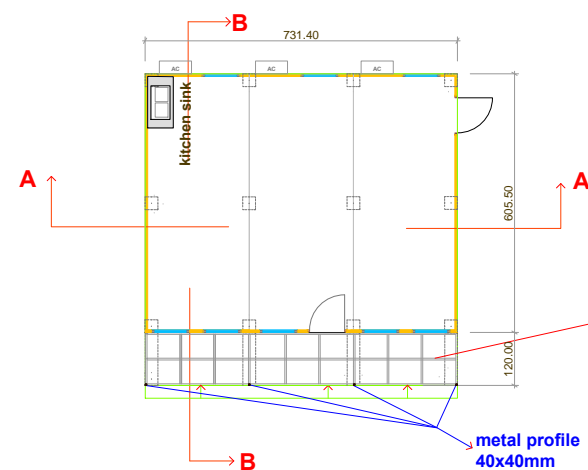
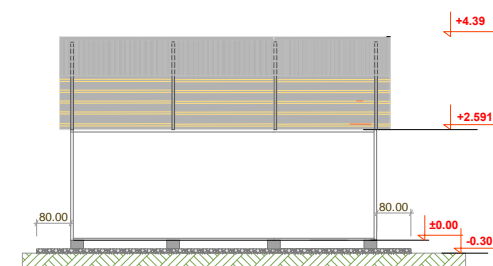
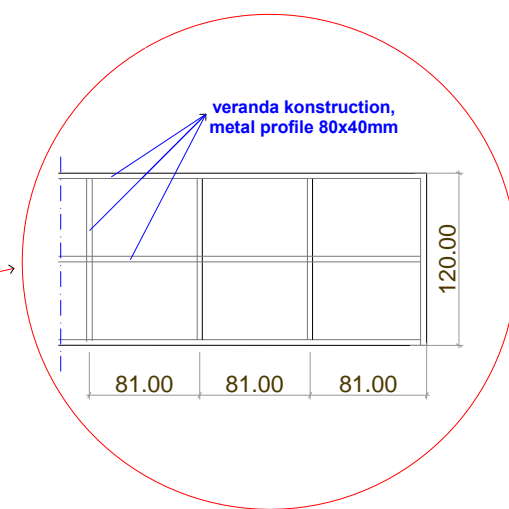


PROJECT:	Eulex MITROVICA Camp "AD"
DRAWING:	Remodelling of New Ablution Unit - ORIGINAL STAGE
CHECKED BY:	
DESIGNED BY:	BMS
SCALE:	NTS
UNIT:	cm
DRAWING No:	01 A
DATE:	FEBRUARY 2010

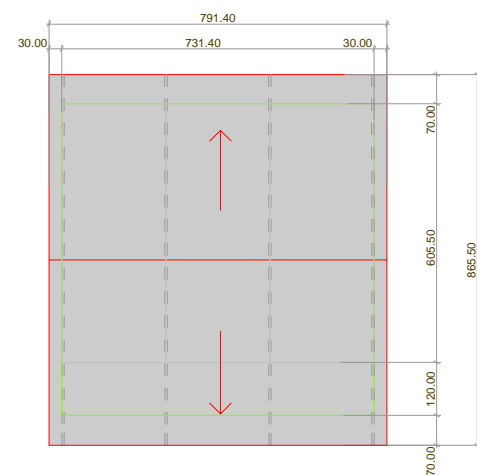




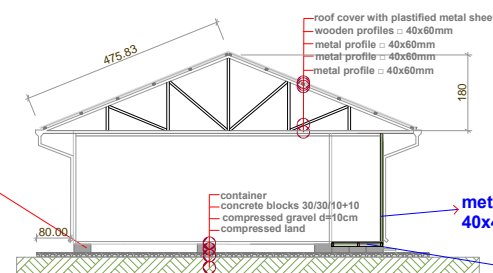
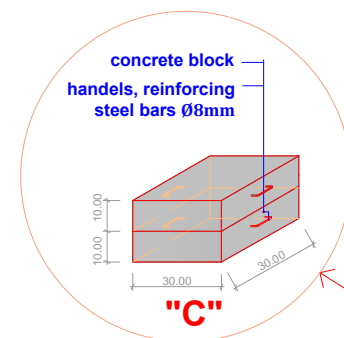
Floor Plan of Recreation "5"



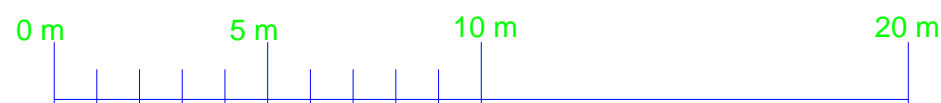
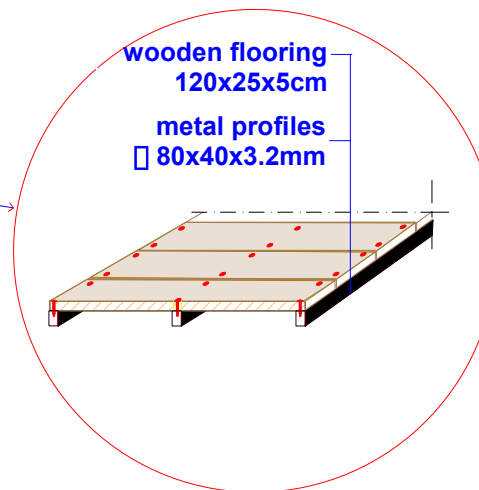
Section A-A



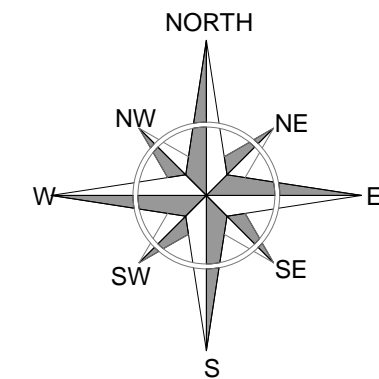
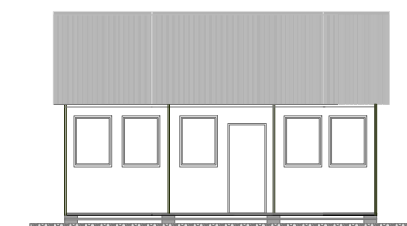
Roof plan



Section B-B



Front view



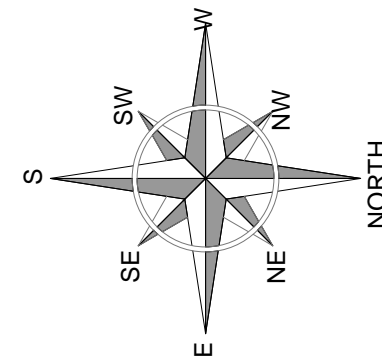
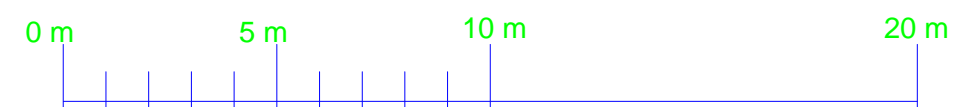
PROJECT:	Eulex MITROVICA Camp		
DRAWING:	"5" Recreation		
CHECKED BY:			
DESIGNED BY:	BMS		
SCALE:	NTS		
UNIT:	cm		
DRAWING No:	05		
DATE:	FEBRUARY 2010		




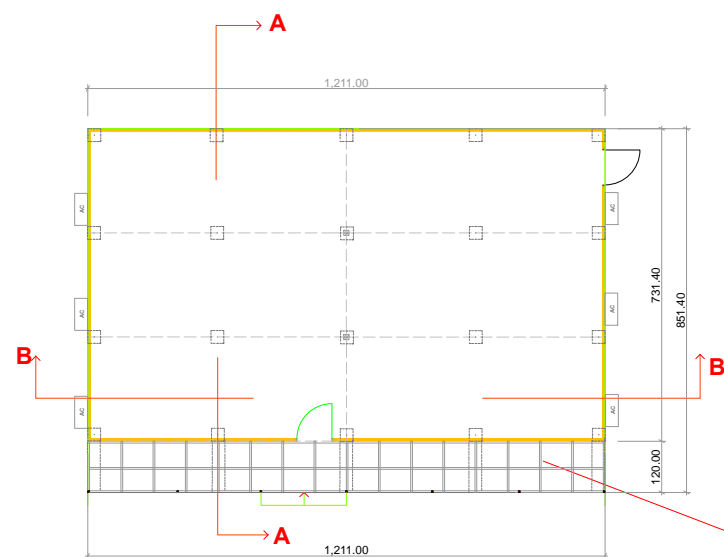


Section A-A

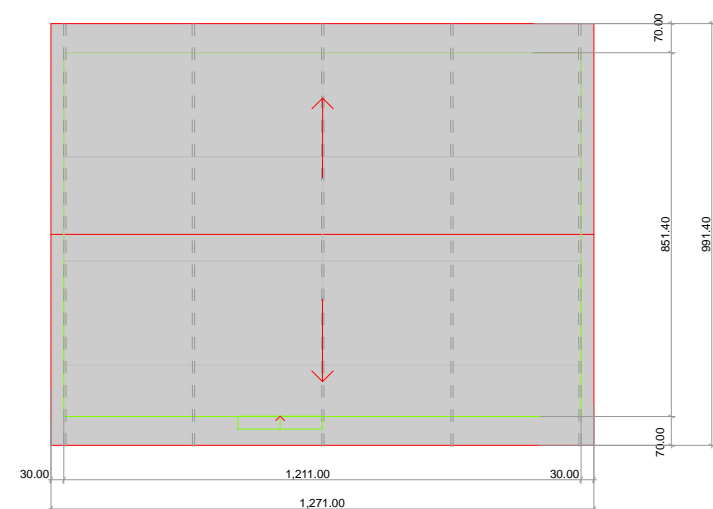
Section B-B



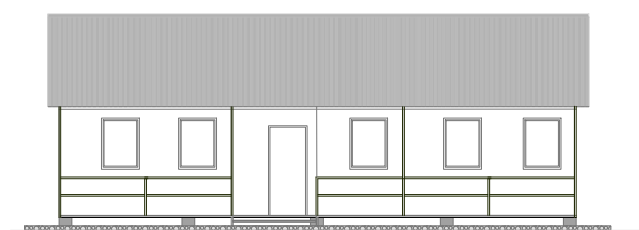
PROJECT:	Eulex MITROVICA Camp		
DRAWING:	"4" INFIRMARY		
CHECKED BY:			
DESIGNED BY:	BMS		
SCALE:	NTS		
UNIT	cm		
DRAWING No:	04		
DATE:	FEBRUARY 2010		BUILDING MANAGEMENT SECTION



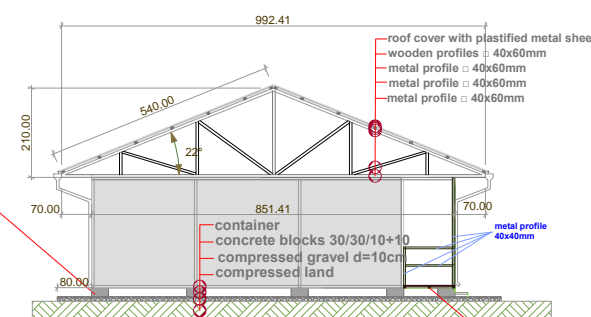
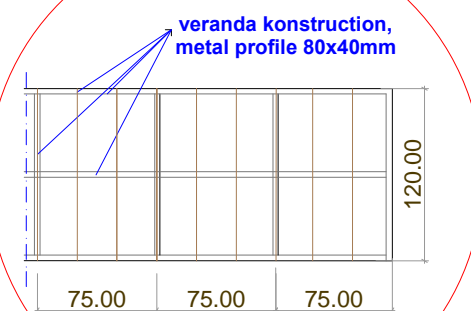
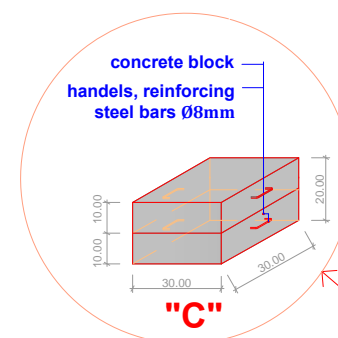
Floor Plan of Church "3"



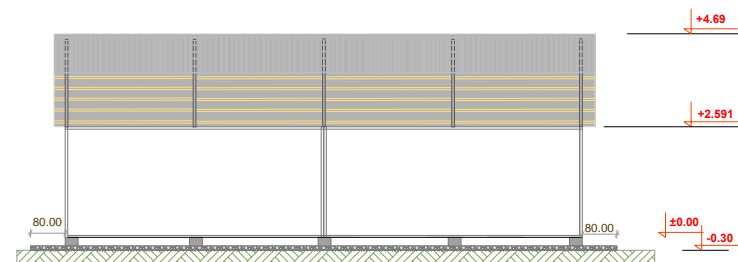
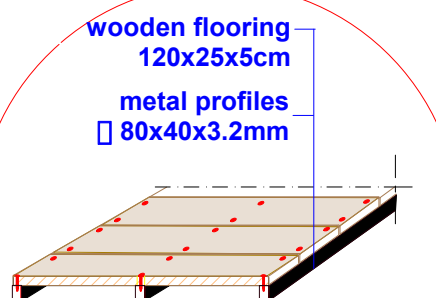
Roof plan



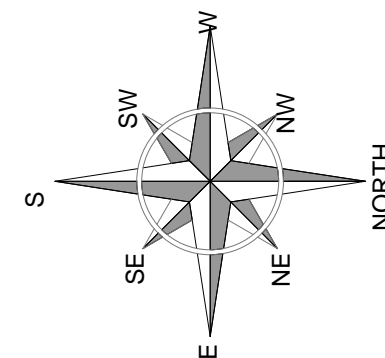
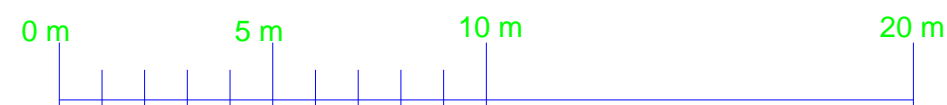
Front view



Section A-A

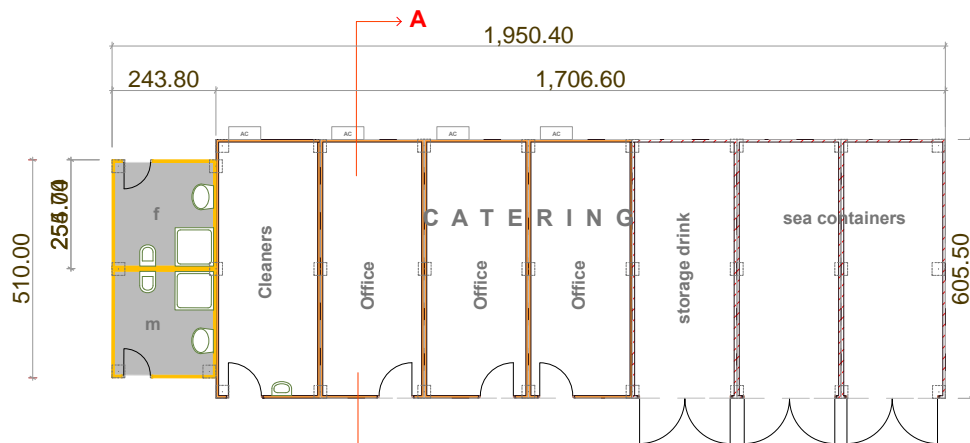


Section B-B

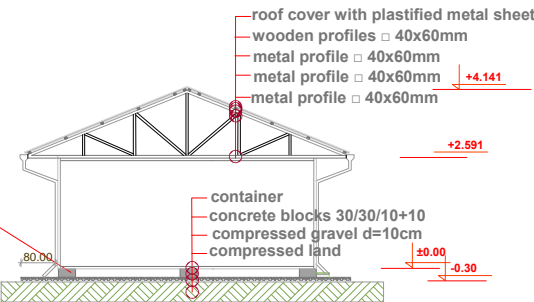
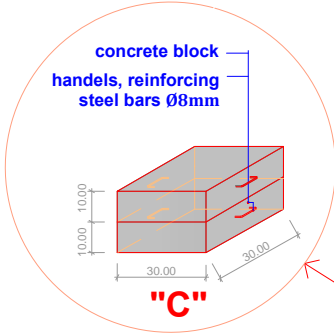


PROJECT:	Eulex MITROVICA Camp
DRAWING:	"3" CHURCH
CHECKED BY:	
DESIGNED BY:	BMS
SCALE:	NTS
UNIT:	cm
DRAWING No:	03
DATE:	FEBRUARY 2010





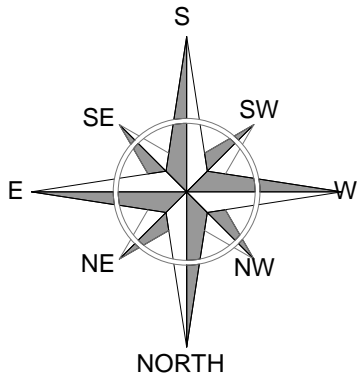
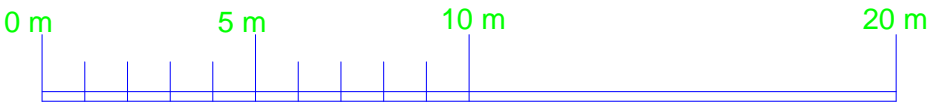
Floor Plan CATERING "2"




Section A-A

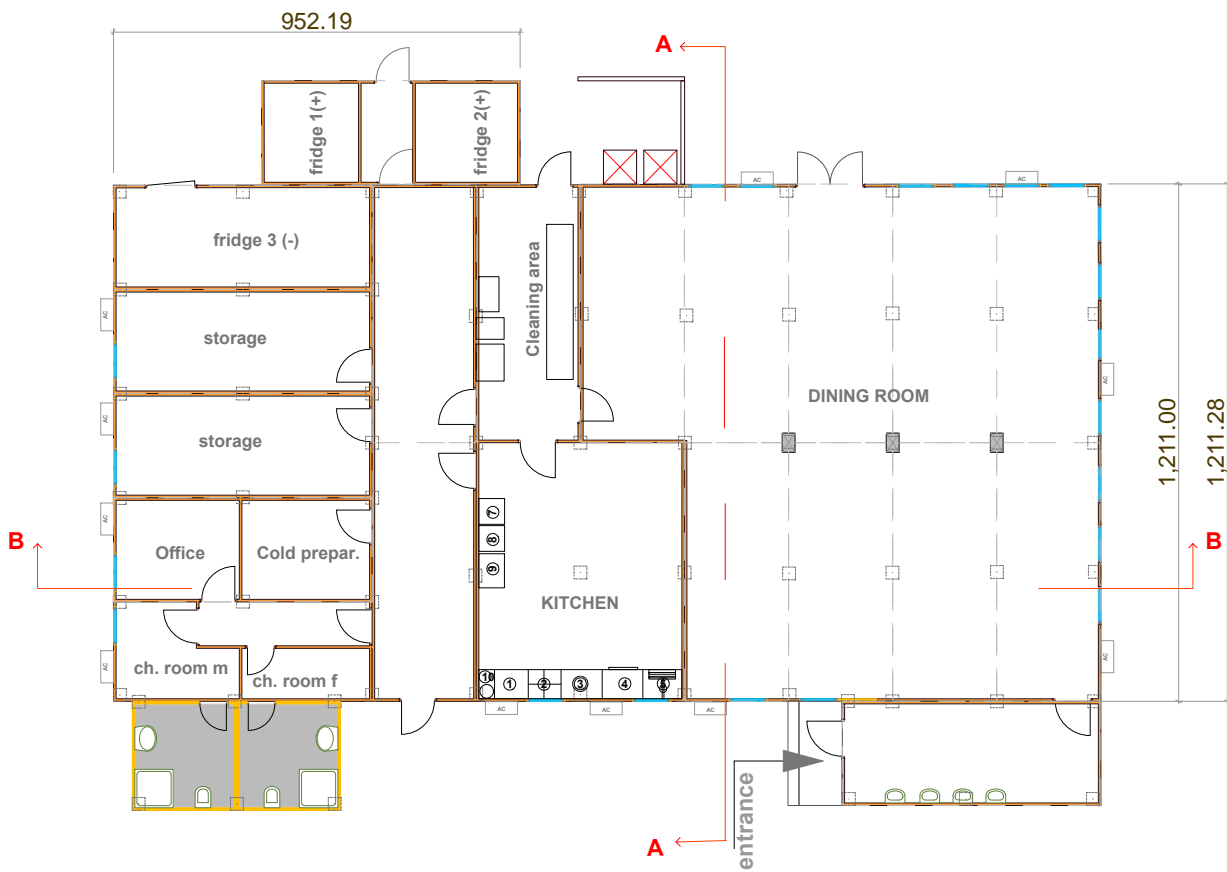


Roof plan

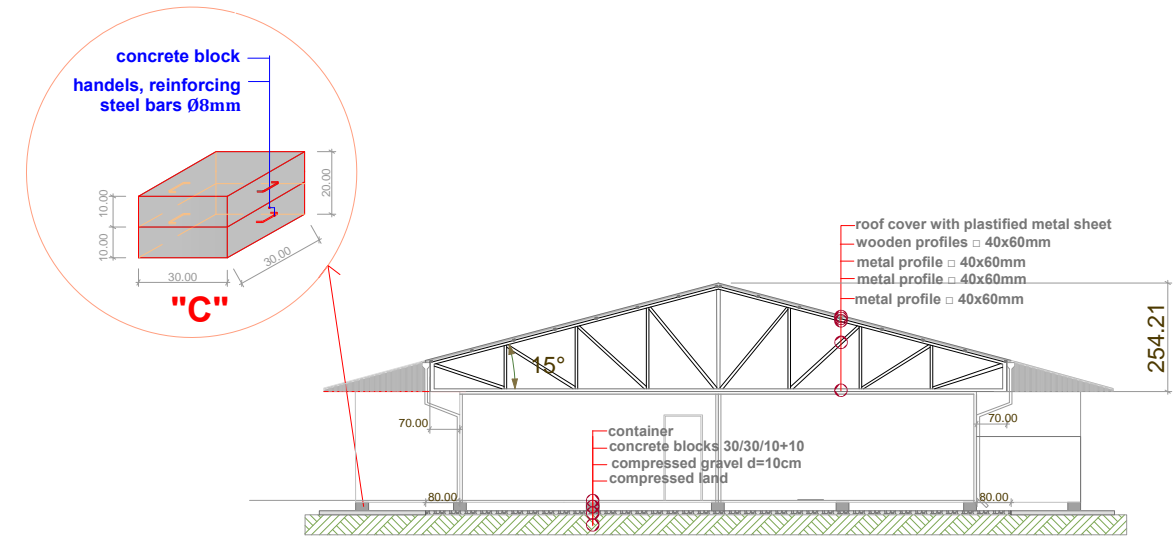


PROJECT:	Eulex MITROVICA Camp		
DRAWING:	"2" CATERING		
CHECKED BY:			
DESIGNED BY:	BMS		
SCALE:	NTS		
UNIT	cm		
DRAWING No:	16		
DATE:	FEBRUARY 2010		
		BUILDING MANAGEMENT SECTION	

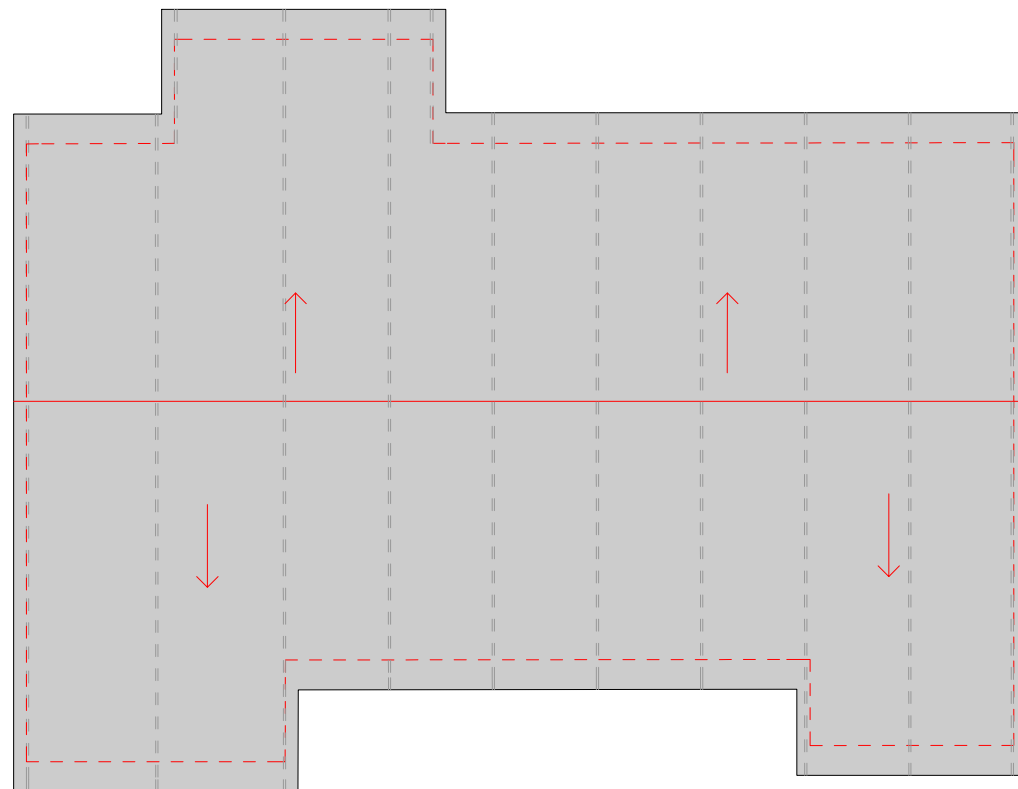




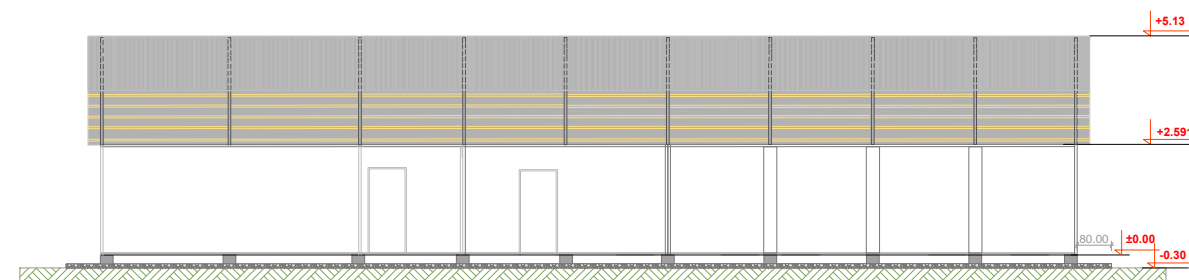
Floor Plan of Restaurant & Kitchen "1"



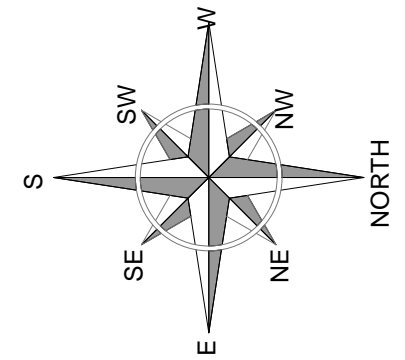
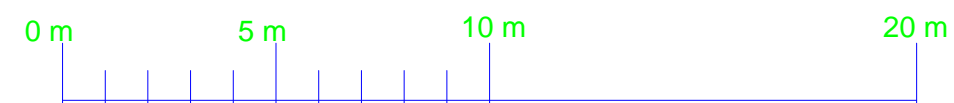
Section A-A



Roof plan

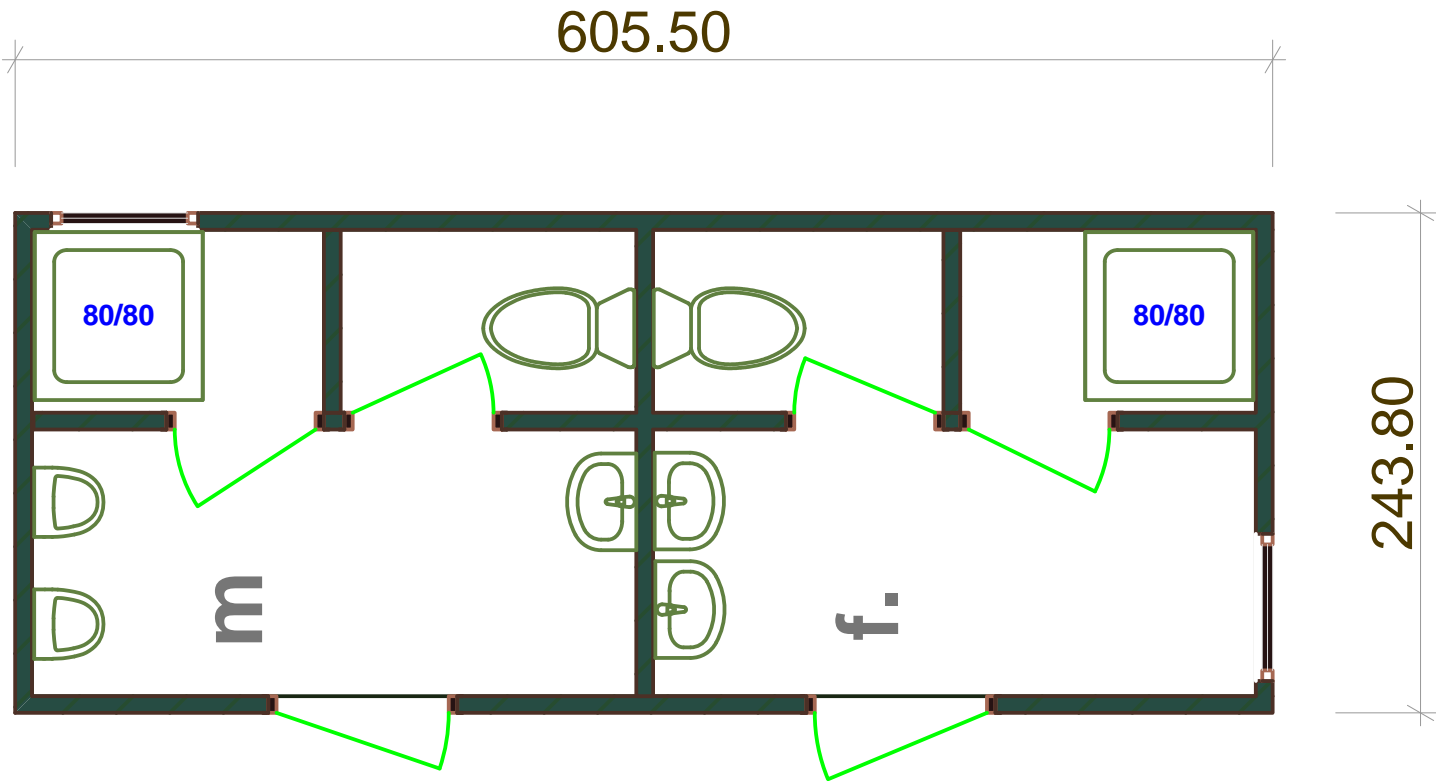


Section B-B



PROJECT:	Eulex MITROVICA Camp		
DRAWING:	"1" RESTAURANT		
CHECKED BY:			
DESIGNED BY:	BMS		
SCALE:	NTS		
UNIT:	cm		
DRAWING No:	08		
DATE:	FEBRUARY 2010		

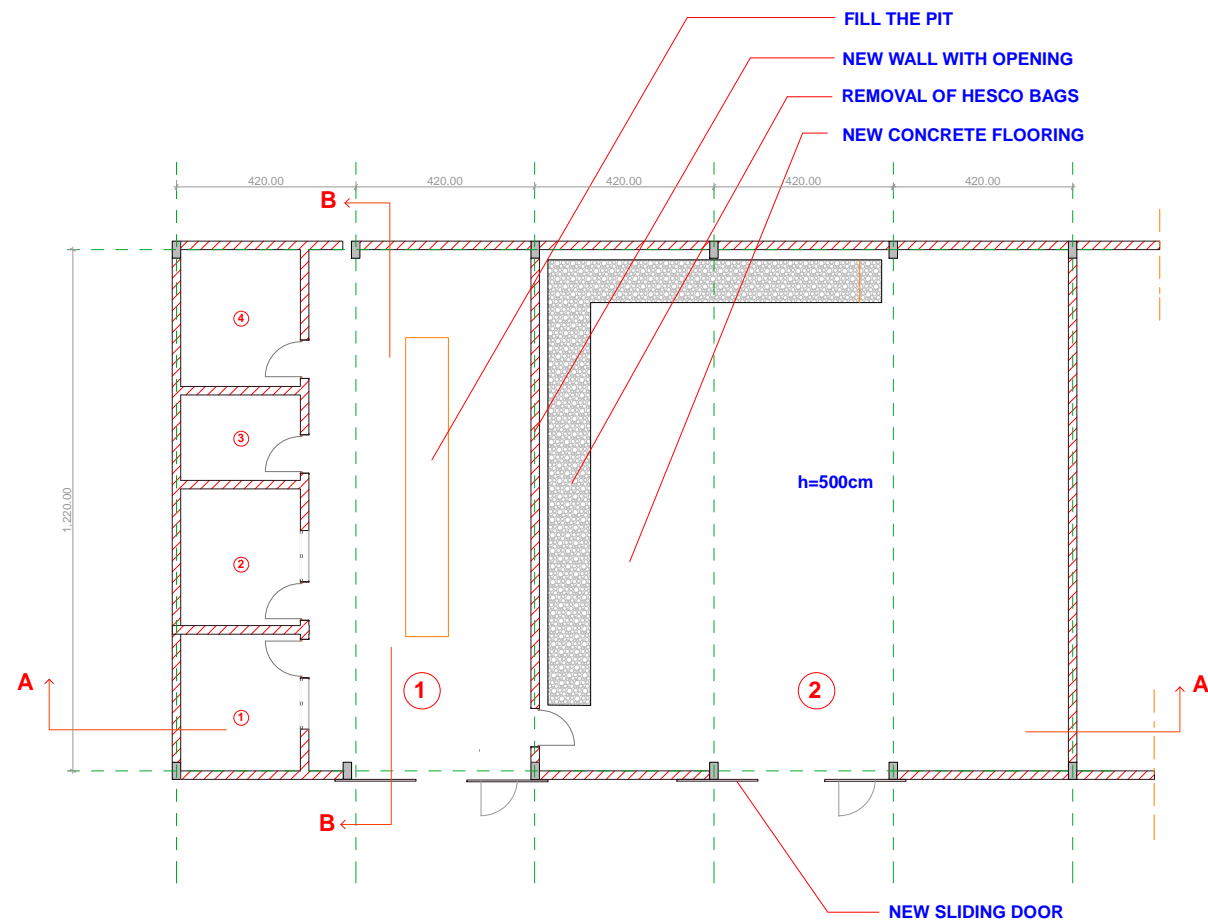




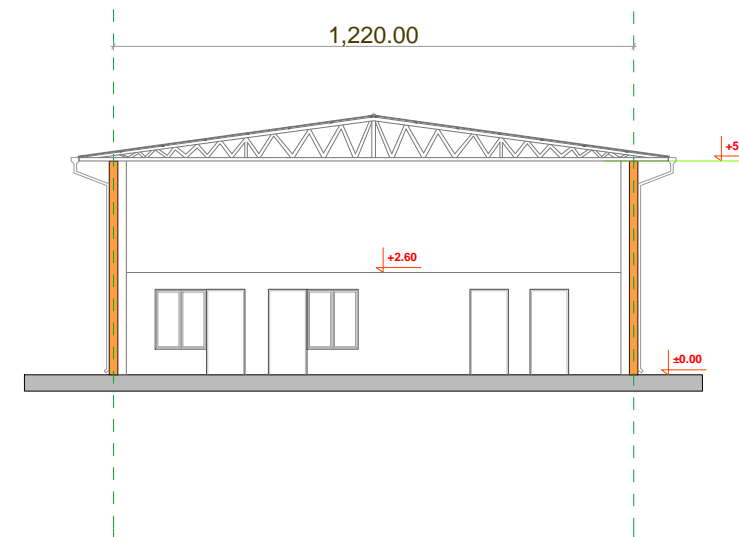
PROJECT:	Eulex MITROVICA Camp "AD"
DRAWING:	Remodelling of New Abolition Unit - FINAL STAGE
CHECKED BY:	
DESIGNED BY:	BMS
SCALE:	NTS
UNIT:	cm
DRAWING No:	01 B
DATE:	FEBRUARY 2010



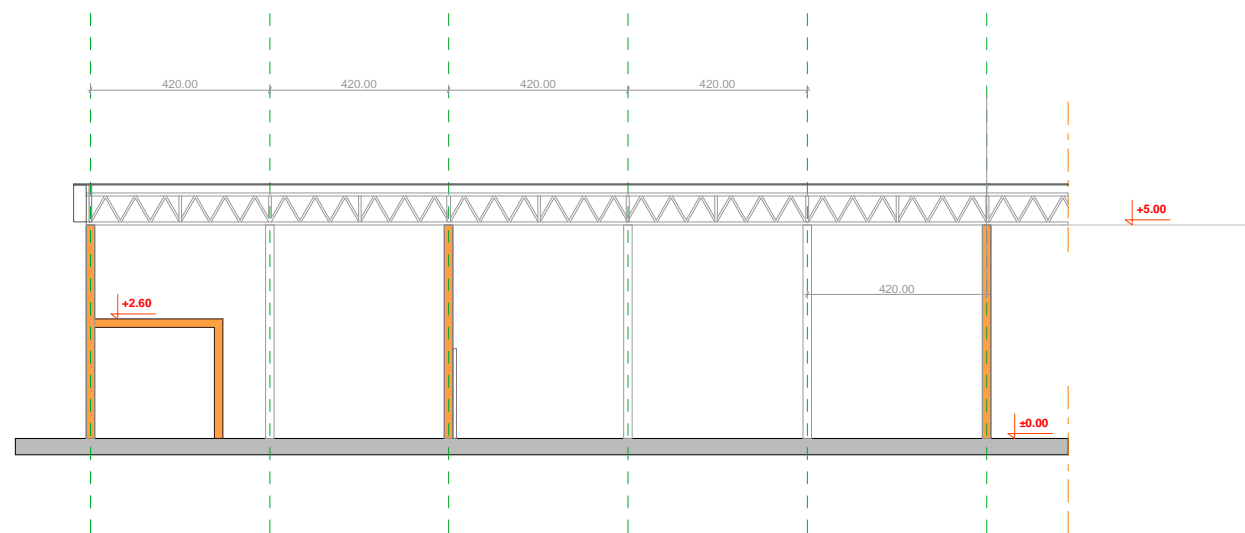
Final Design Document



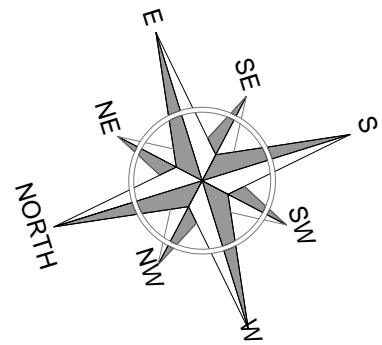
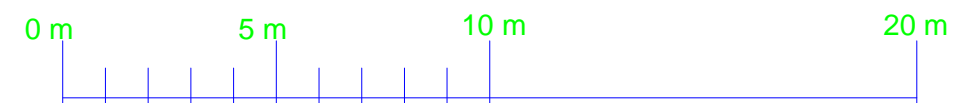
Floor Plan "W" Workshop



Section B-B



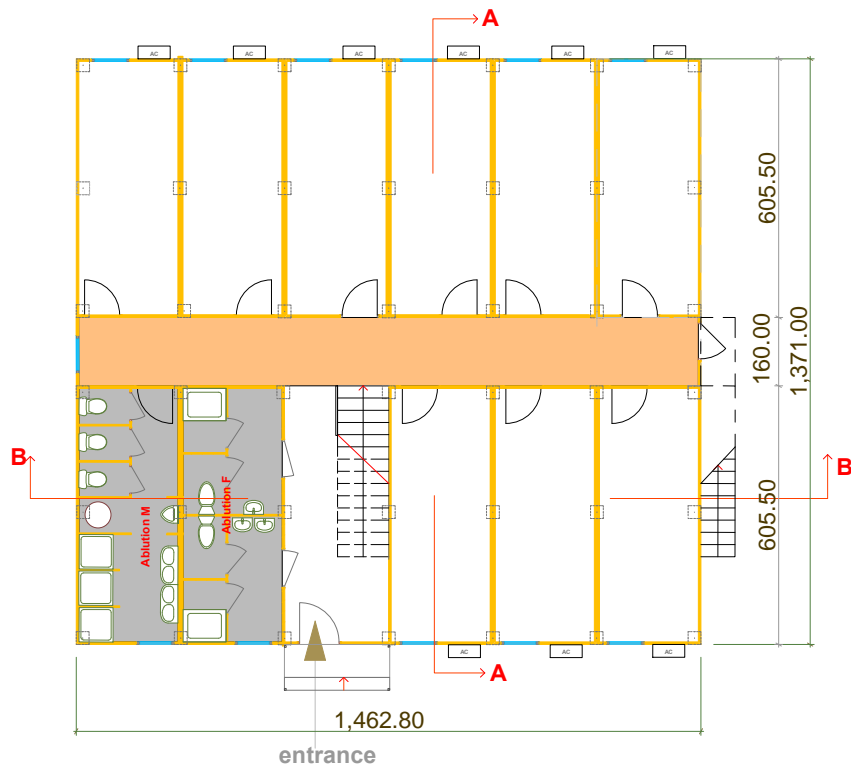
Section A-A



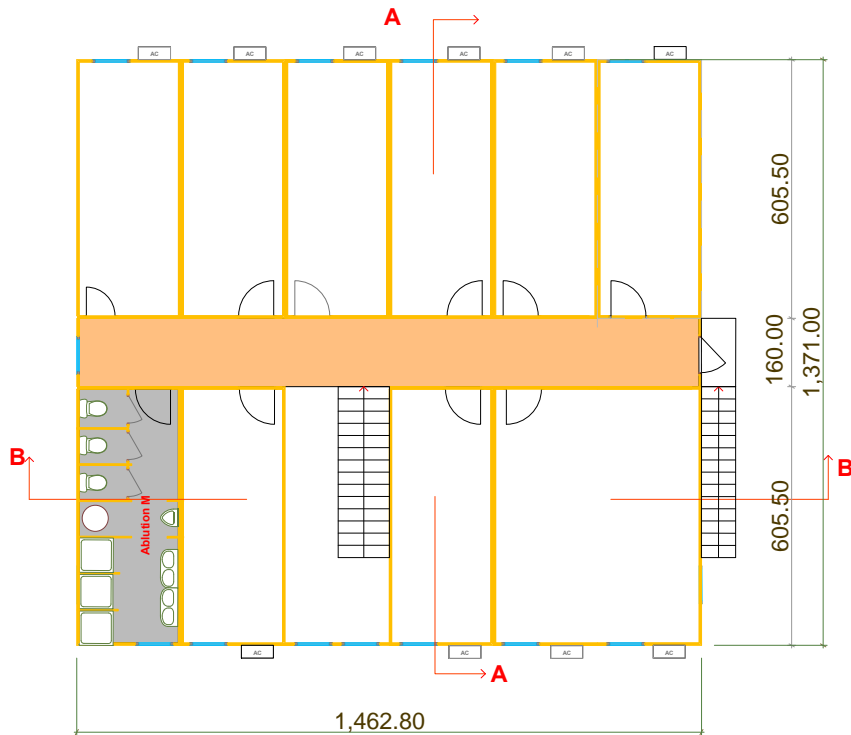
PROJECT:	Eulex MITROVICA Camp		
DRAWING:	"W" WORKSHOP		
CHECKED BY:			
DESIGNED BY:	BMS		
SCALE:	NTS		
UNIT:	cm		
DRAWING No:	13		
DATE:	FEBRUARY 2010		



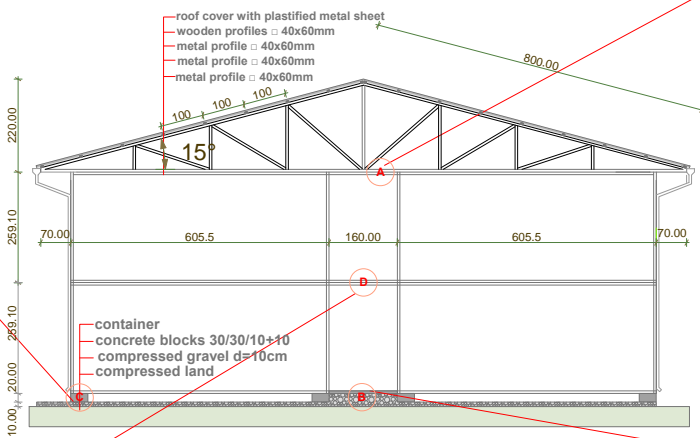
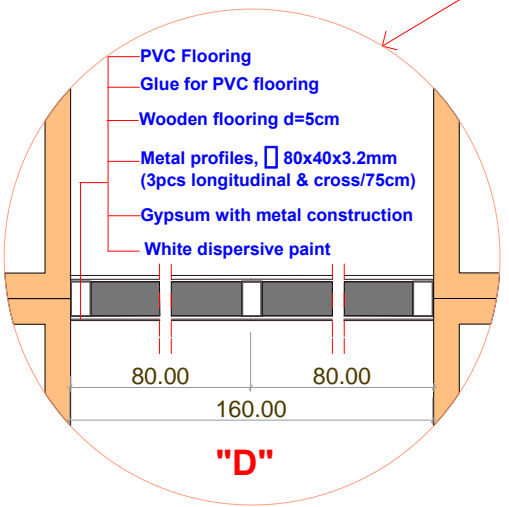
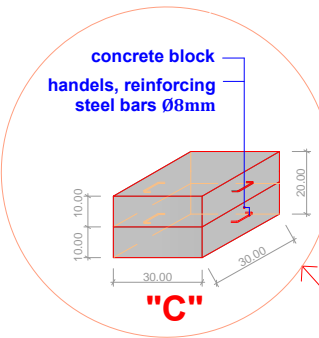
BUILDING MANAGEMENT SECTION



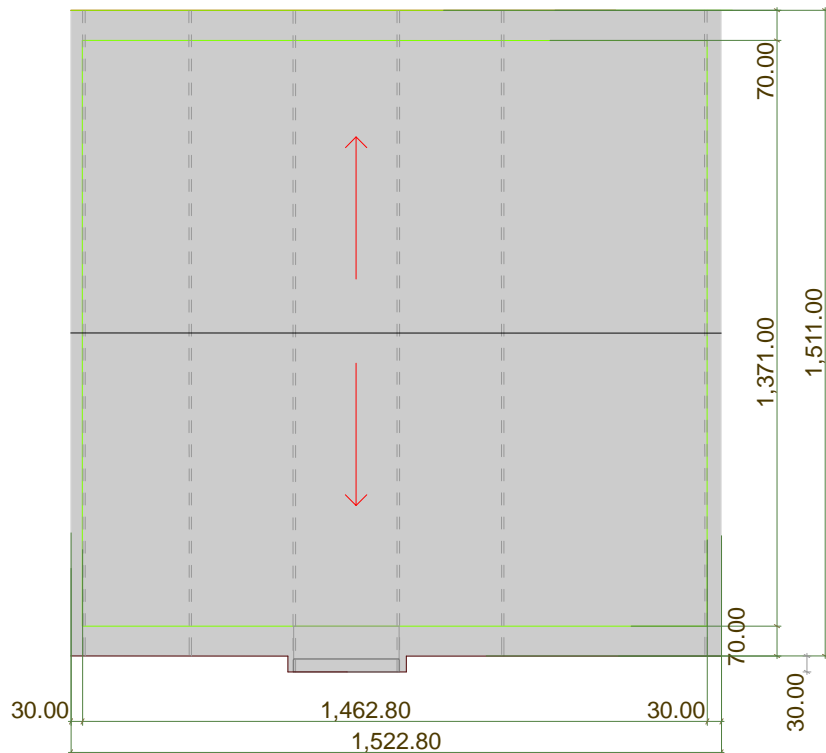
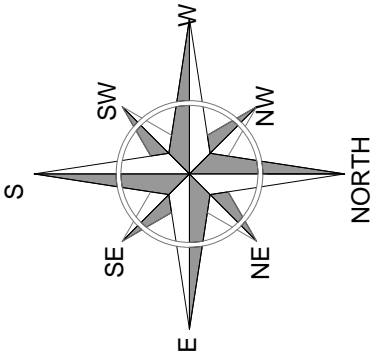
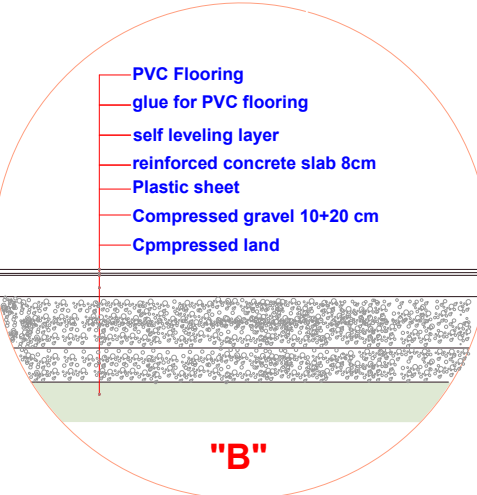
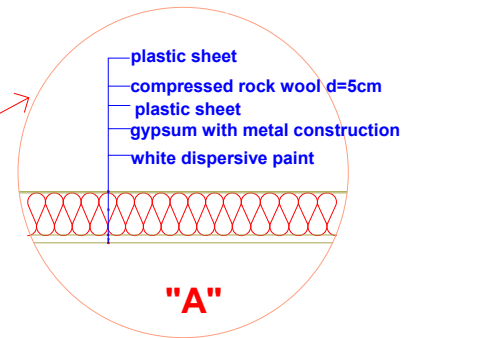
Ground Floor, Rn block



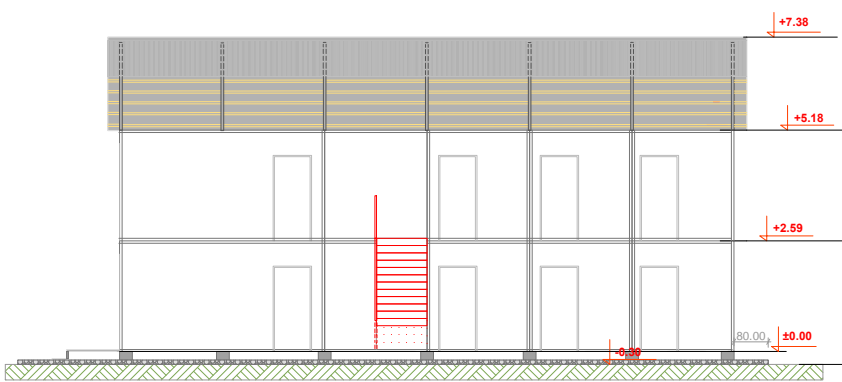
First floor, Rn block



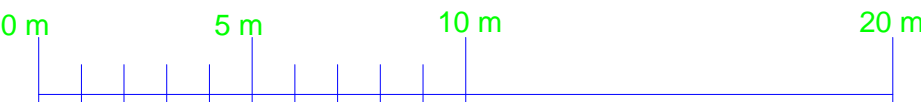
Section A-A



Roof plan

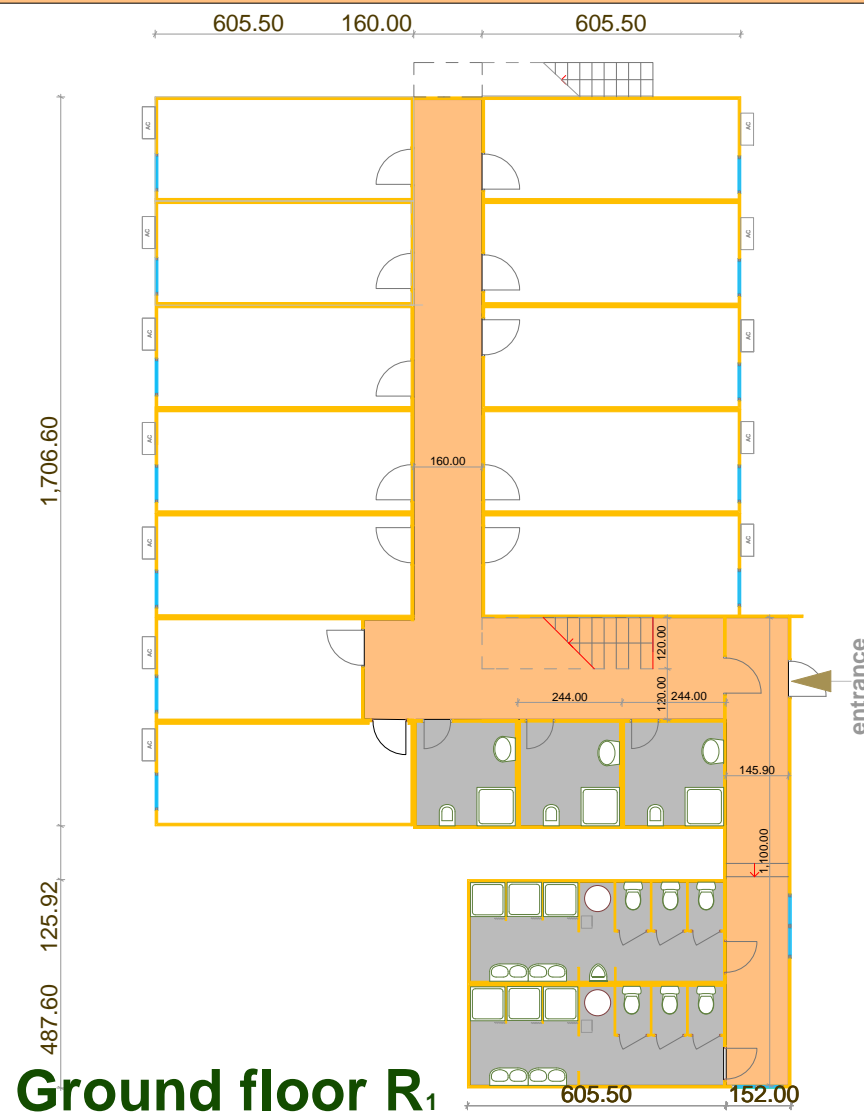


Section B-B



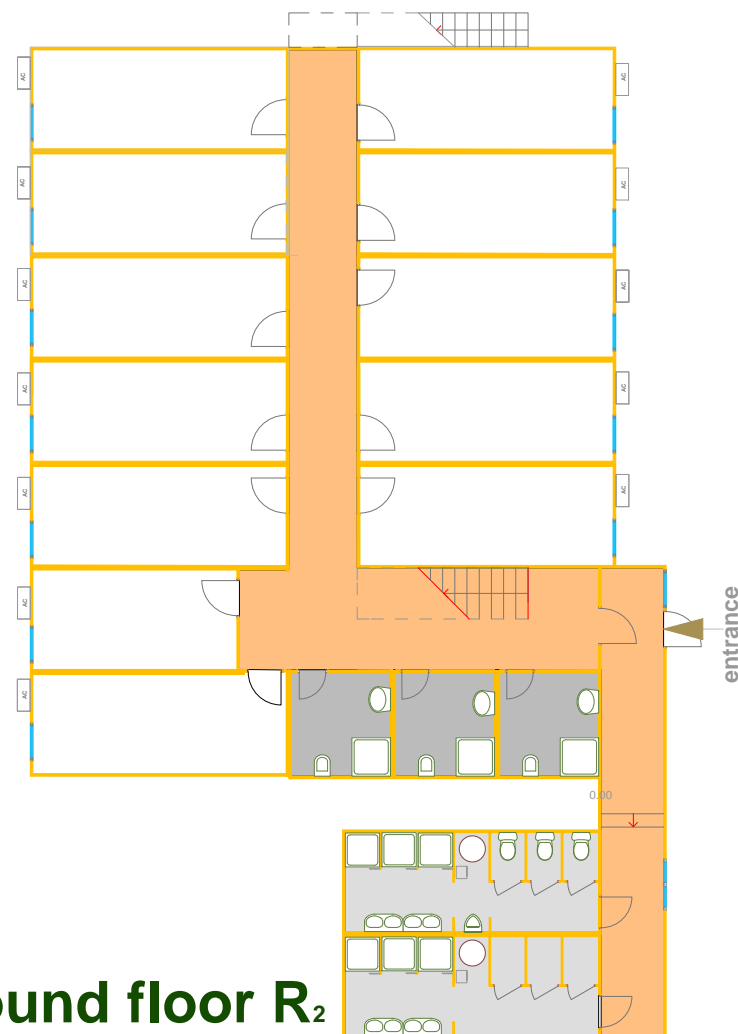
PROJECT:	Eulex MITROVICA Camp
DRAWING:	"Rn" New Residential
CHECKED BY:	
DESIGNED BY:	BMS
SCALE:	NTS
UNIT:	cm
DRAWING No:	01
DATE:	FEBRUARY 2010



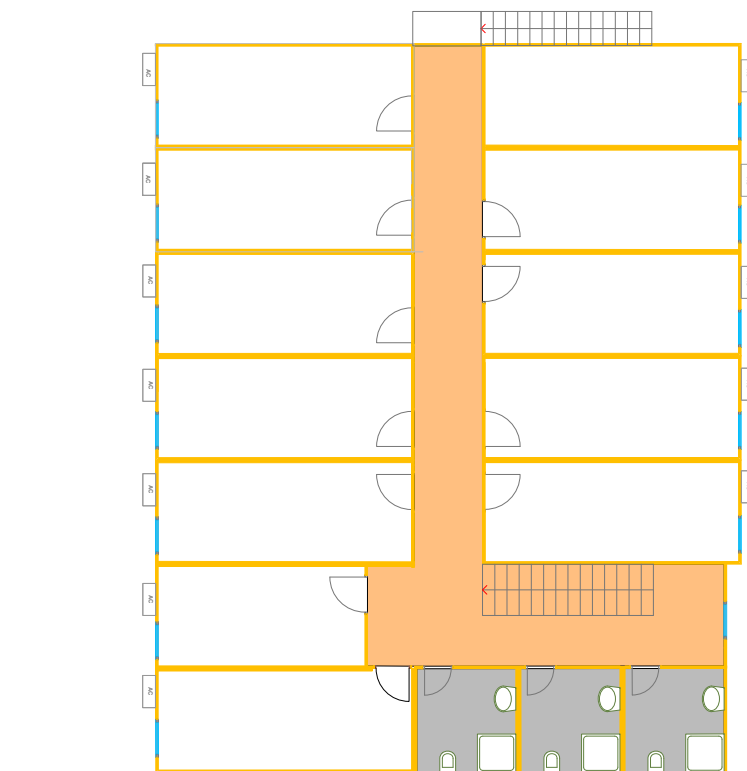
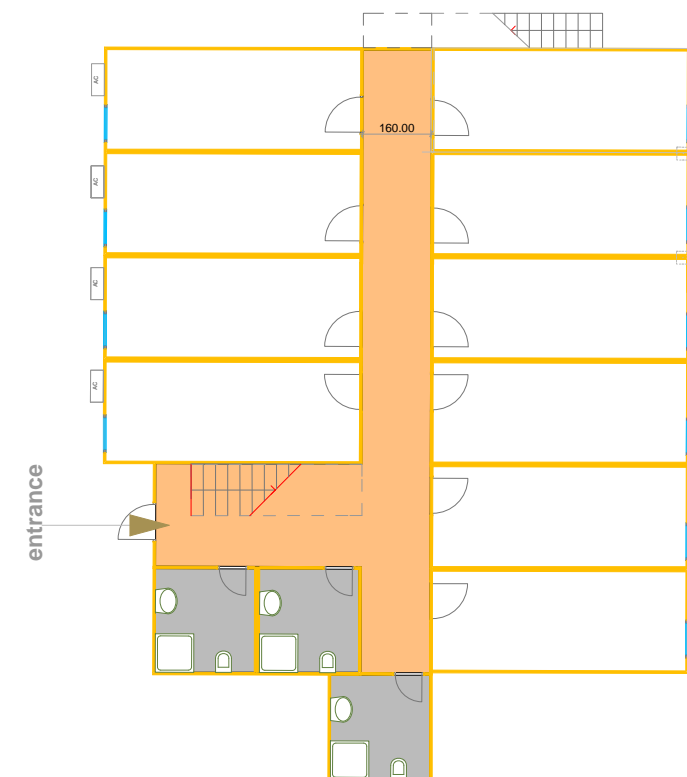


Ground floor R₁

Ground floor R₂

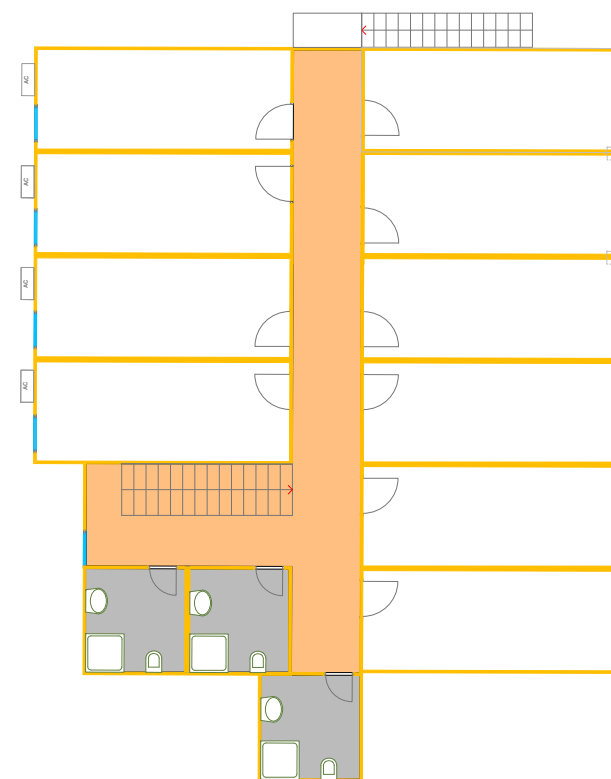
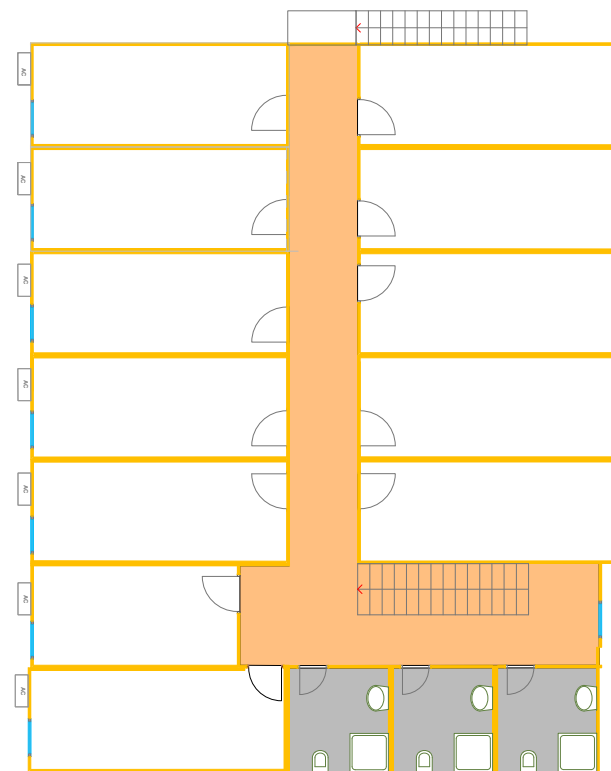


Ground floor Plan R₃ block

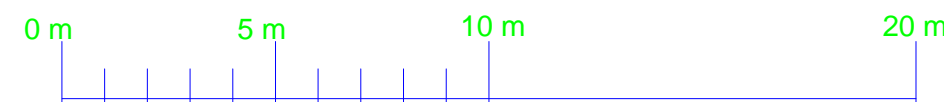
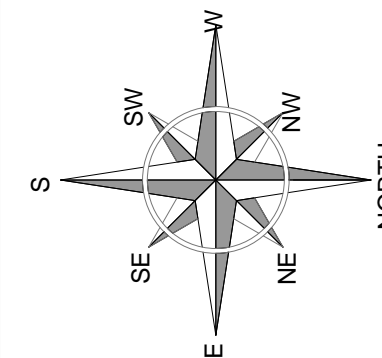


First Floor R₁ block

First Floor R₂ block

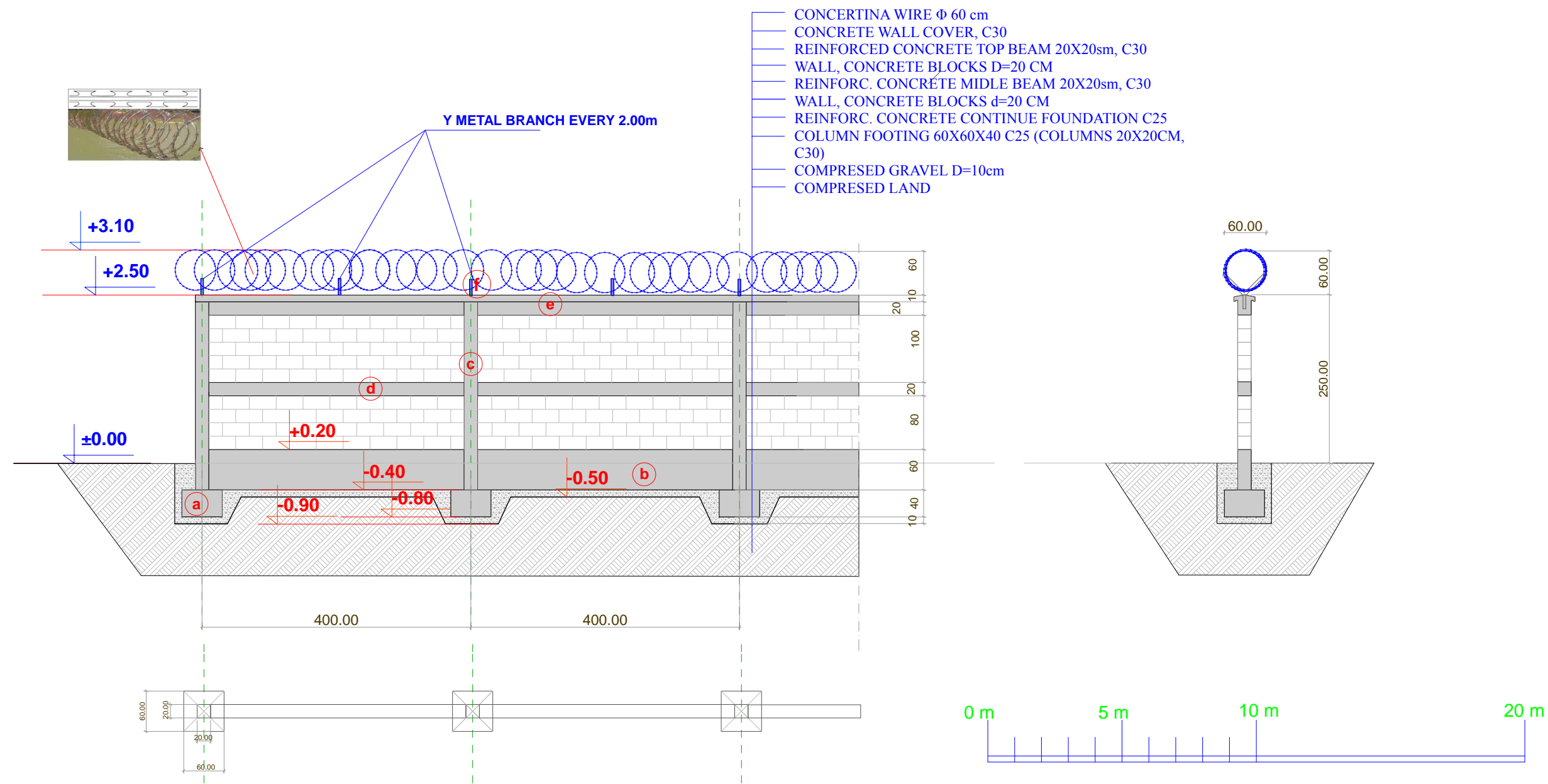


First Floor R₃ block



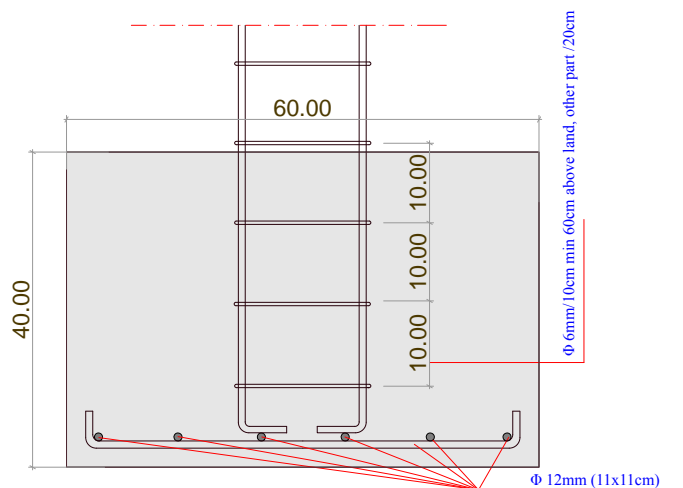
PROJECT:	Eulex MITROVICA Camp		
DRAWING:	"R ₁ "; "R ₂ "; "R ₃ "; Residential Blocks		
CHECKED BY:			
DESIGNED BY:	BMS		
SCALE:	NTS		
UNIT:	cm		
DRAWING No:	10		
DATE:	FEBRUARY 2010		



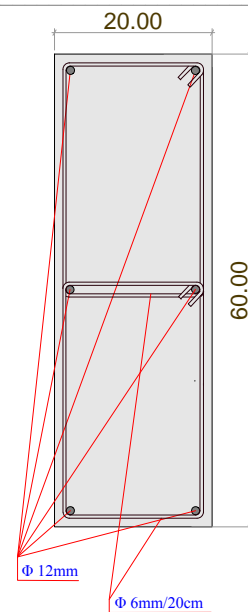


DETAILS:

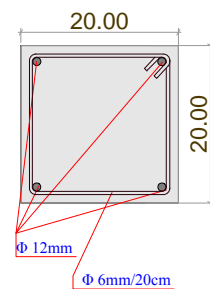
a FOOTING C25



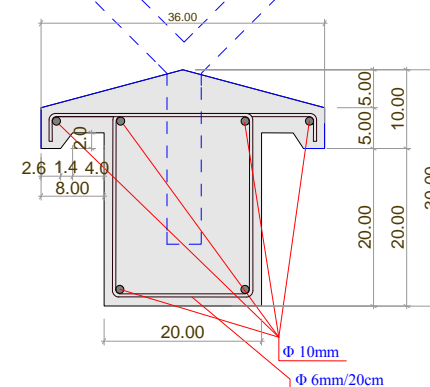
b CONTINUE FOUNDATION BEAM C25



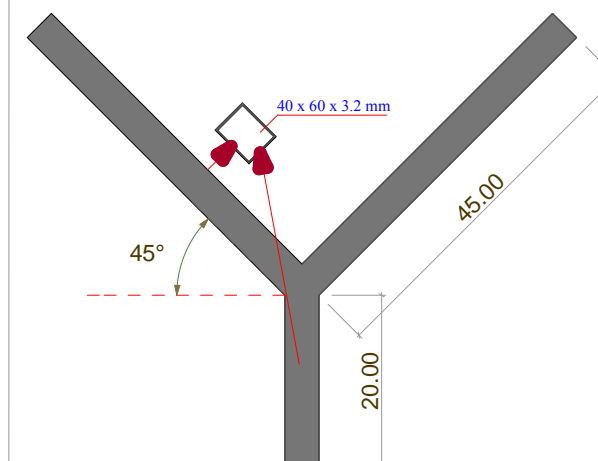
c COLUMNS C30
d MIDDLE BEAM C30



e UPPER BEAM WITH COVER C30

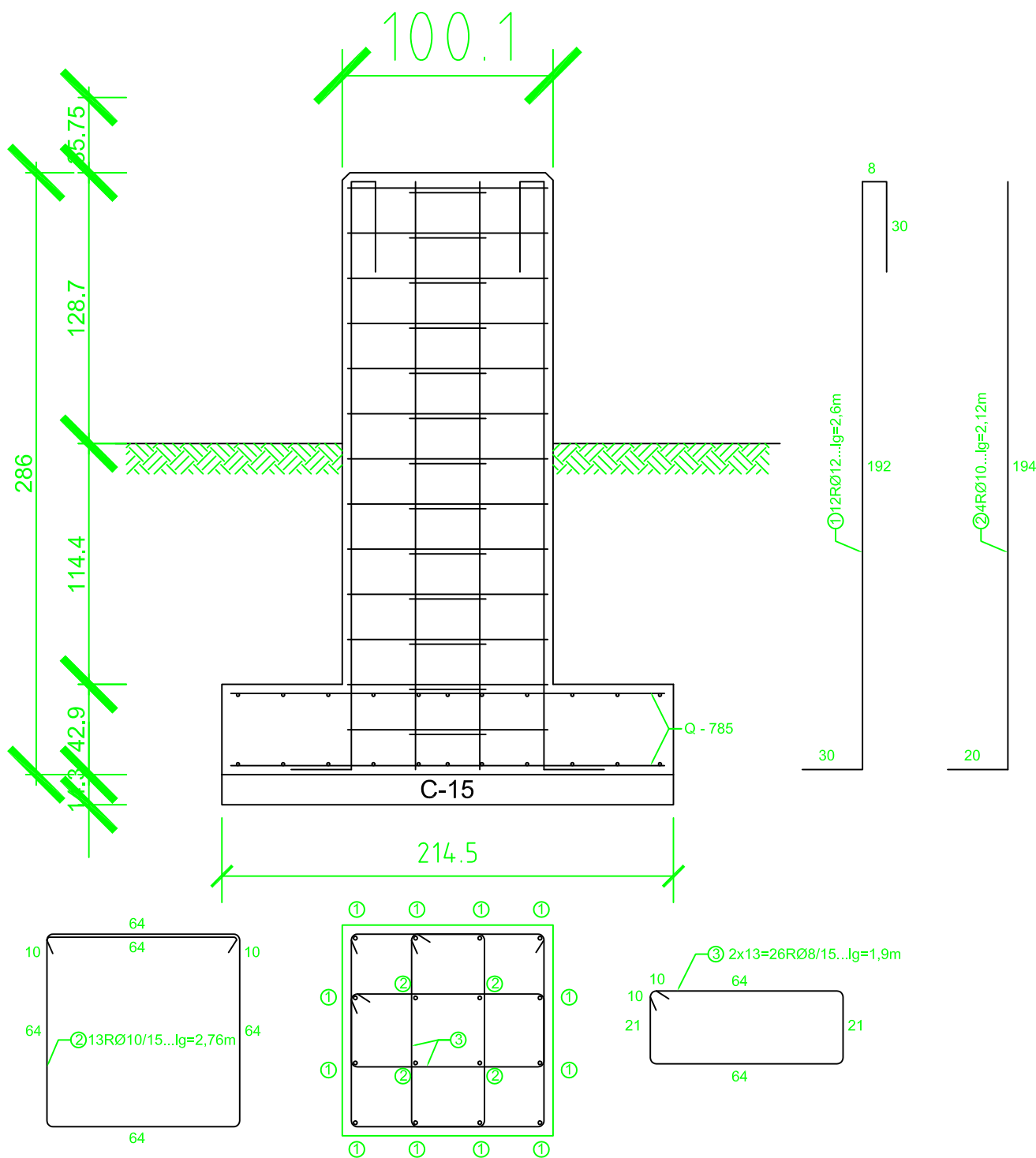


f Y METAL BRANCH



PROJECT:	Eulex MITROVICA Camp
DRAWING:	PERIMETER WALL
CHECKED BY:	
DESIGNED BY:	BMS
SCALE:	NTS
UNIT:	cm
DRAWING No:	15
DATE:	FEBRUARY 2010

BUILDING MANAGEMENT SECTION

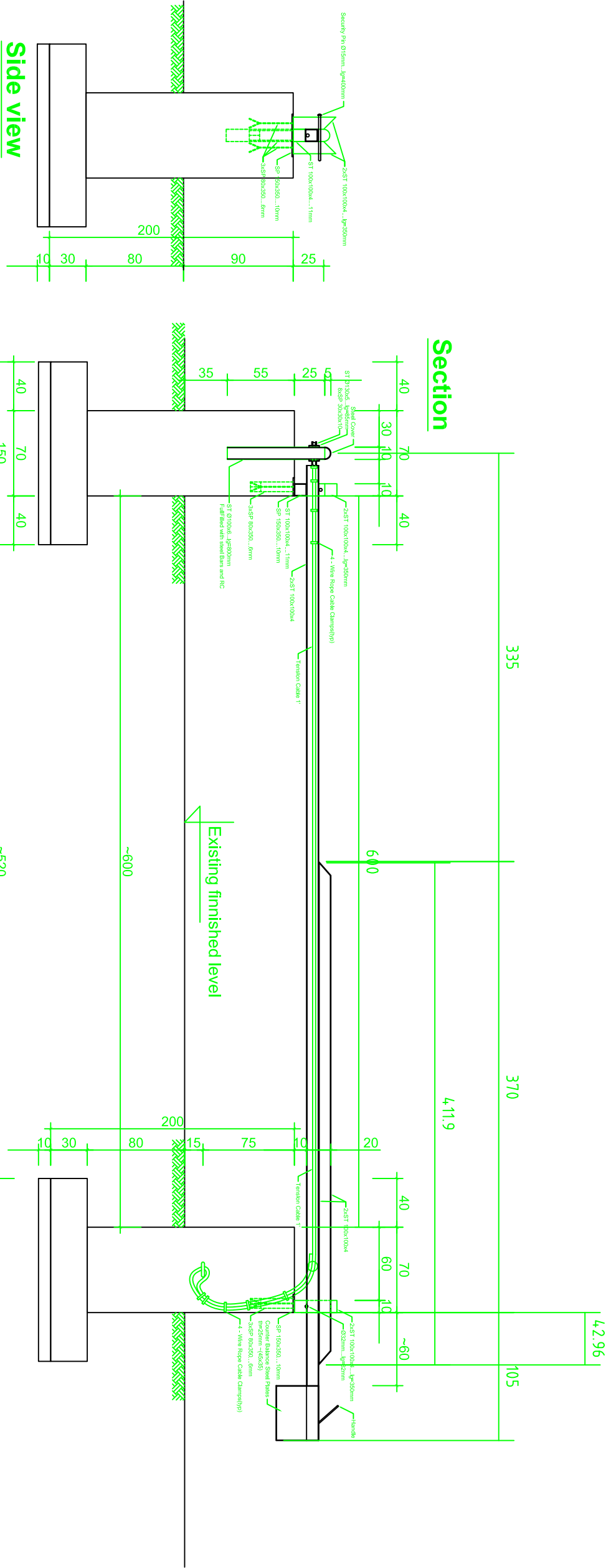


Schedule of Materials for 6m-Wide Clear Access

1. □ ST 100x100x4mm	13,77 m
2. Ø100 ST Ø100x5mm.....	0,80 m
3. Ø130 ST Ø130x5mm.....	0,085m
4. Ø32 SB Ø32mm.....	1,5 m
5. Ø15 SB Ø15mm.....	1,4 m
6. = SP 10mm.....	0,105m2
7. = SP 6mm.....	0,168m2
8. Tension Cable Ø1'.....	10,0 m
9. Concrete C25.....	3,47 m3
10. = SP 25mm(counter Balance) 35x45x2,5cm	
<u>Reinforcement for Foundation</u>	
10. Ø12.....	31,20 m
11. Ø10.....	44,36 m
12. Ø8.....	49,40 m
13. Q-785	4,5m2

PROJECT:	Eulex MITROVICA Camp
DRAWING:	BOOM GATE DETAILS
CHECKED BY:	
DESIGNED BY:	
SCALE:	Not to scale
UNIT	cm
DRAWING No:	15/3
DATE:	FEBRUARY 2010

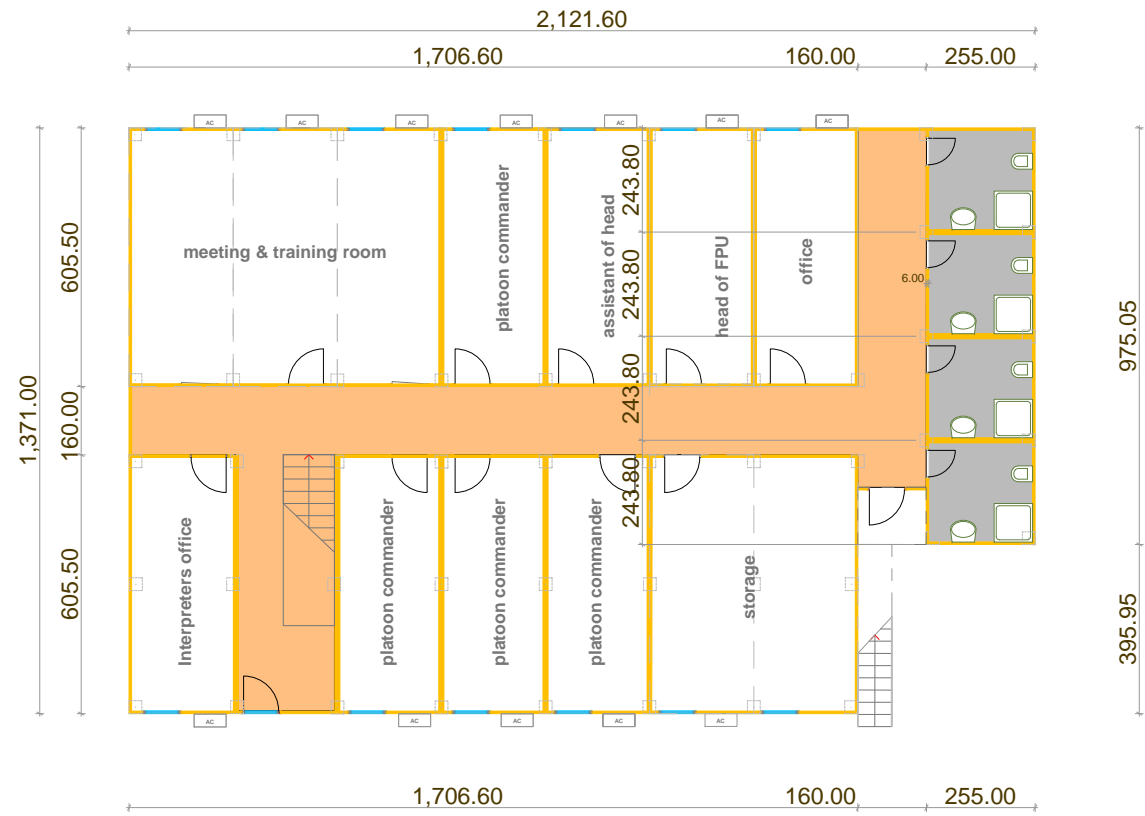




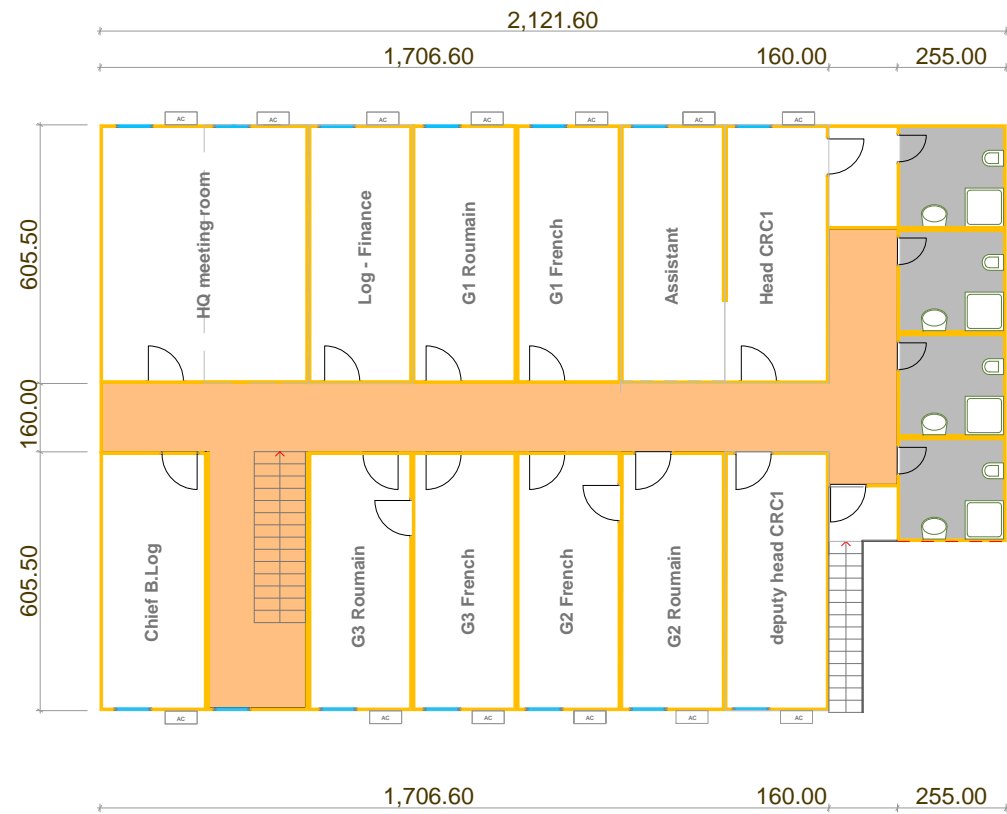
PROJECT:	Eulex MITROVICA Camp
DRAWING:	BOOM GATE DETAILS
CHECKED BY:	
DESIGNED BY:	
SCALE:	NTS
UNIT	cm
DRAWING No:	15/2
DATE:	JUNE 2010



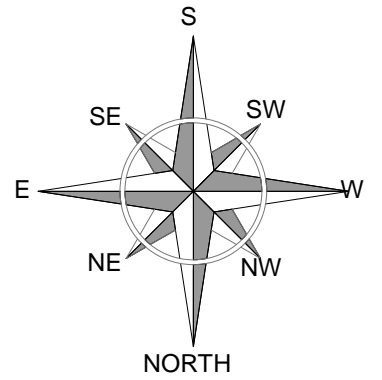
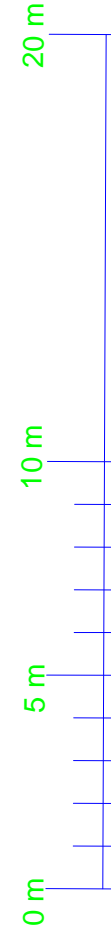
EUROPEAN COMMISSION



Ground floor Plan O₁ block



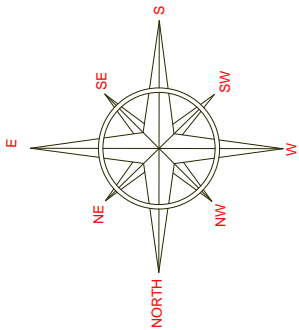
First Floor O₁ block



PROJECT:	Eulex MITROVICA Camp		
DRAWING:	"O1" OFFICE		
CHECKED BY:			
DESIGNED BY:	BMS		
SCALE:	NTS		
UNIT:	cm		
DRAWING No:	07		
DATE:	FEBRUARY 2010		

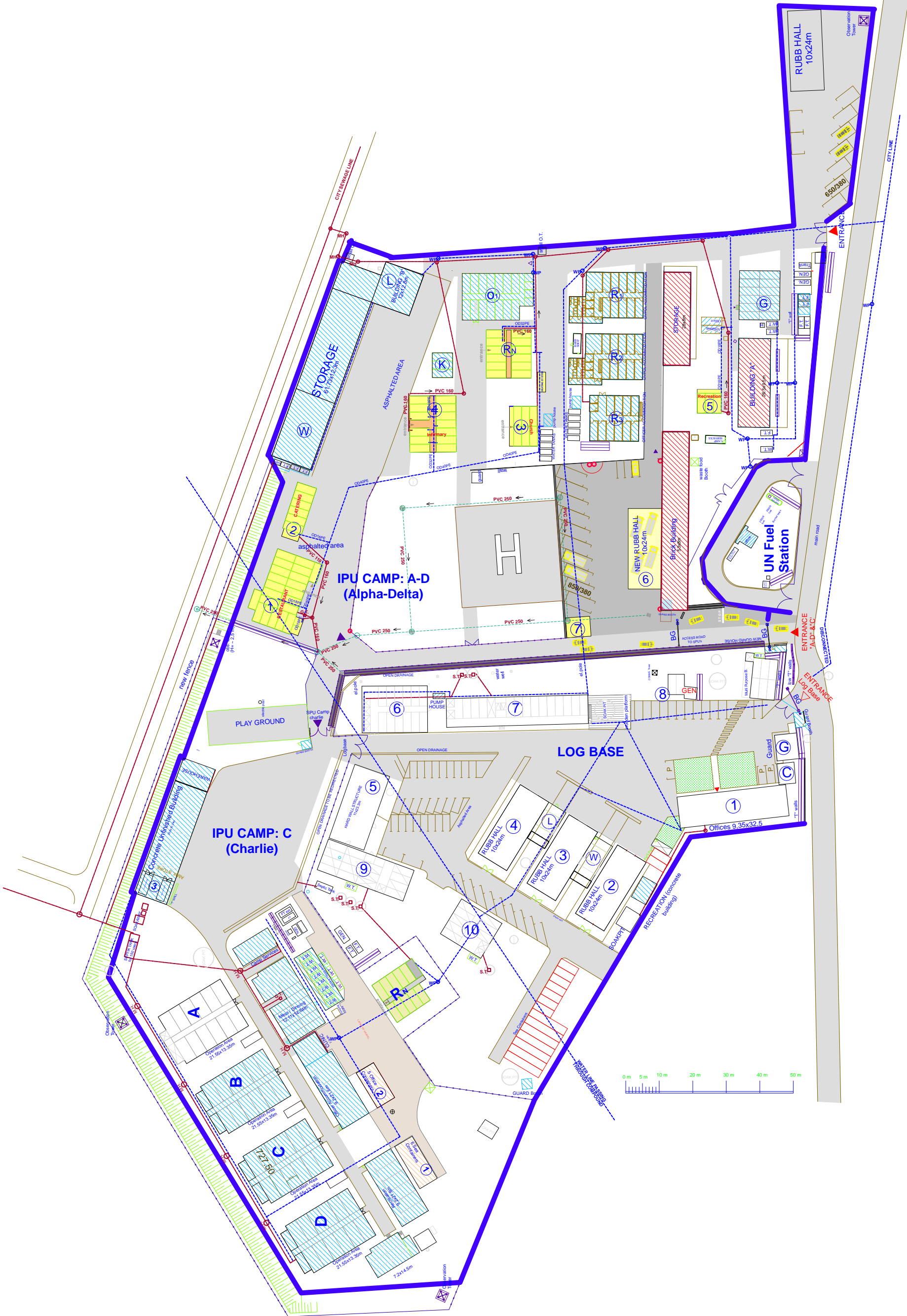


BUILDING MANAGEMENT SECTION

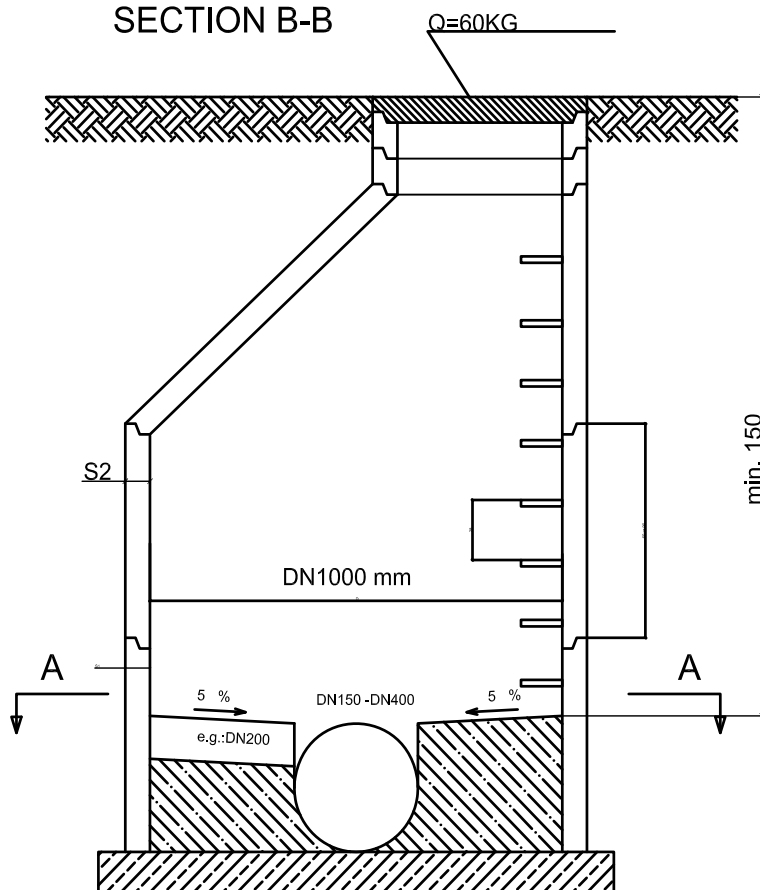


WATER&SEWERAGE SYSTEM	
WATER LINE	
WATER PIT (M.H.)	
WATER TANK	
SEWAGE LINE	
SEWAGE MAIN HOLE	
SEPTIC TANK	
GREASE TRAP	

PROJECT:	Eulex MITROVICA Camp
DRAWING:	WATER&SEWERAGE SYST.
CHECKED BY:	
DESIGNED BY:	
SCALE:	NTS
UNIT:	cm
DRAWING No:	003
DATE:	MAY 2010

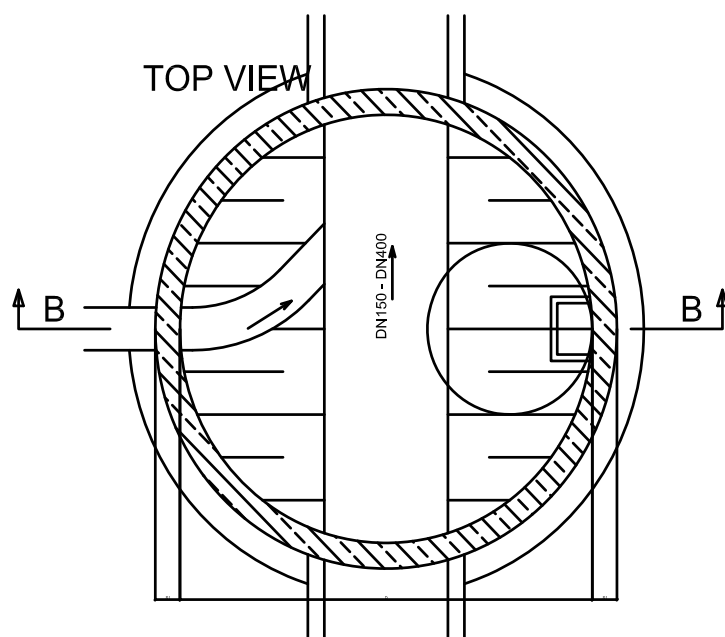


SECTION B-B



	min	min	
Diameter of pipe	S1	S2	D
[mm]	[mm]	[mm]	[mm]
up to 600	130	120	1000

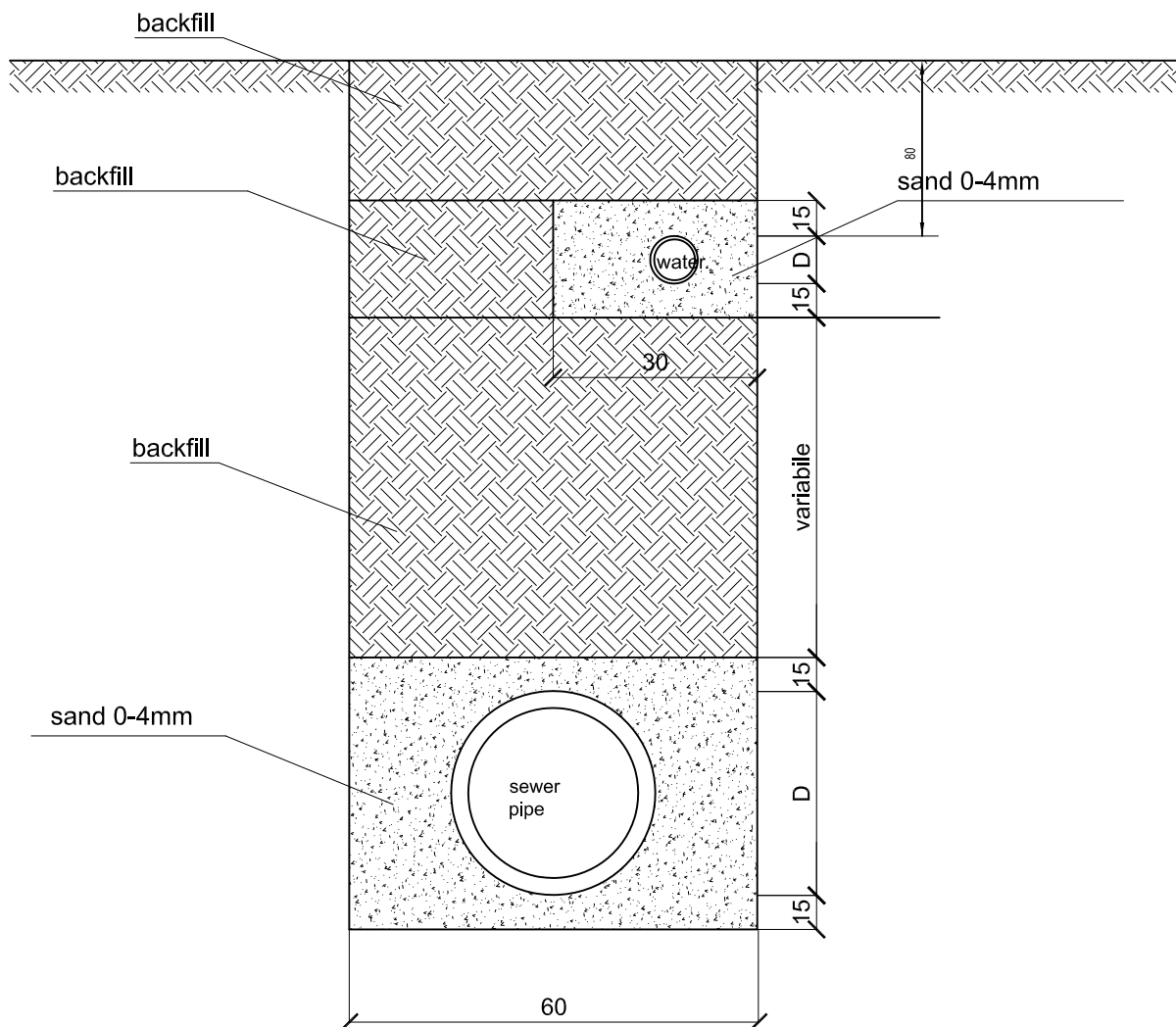
SECTION A-A



PROJECT:	Eulex MITROVICA Camp		
DRAWING:	WATER AND SEWERAGE DETAIL		
CHECKED BY:			
DESIGNED BY:			
SCALE:	Not to scale		
UNIT	cm		
DRAWING No:	003/2		
DATE:	FEBRUARY 2010		

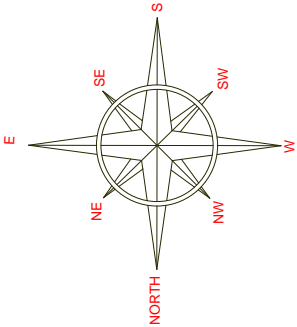


Detail of placement of pipes on trenches water and sewerage




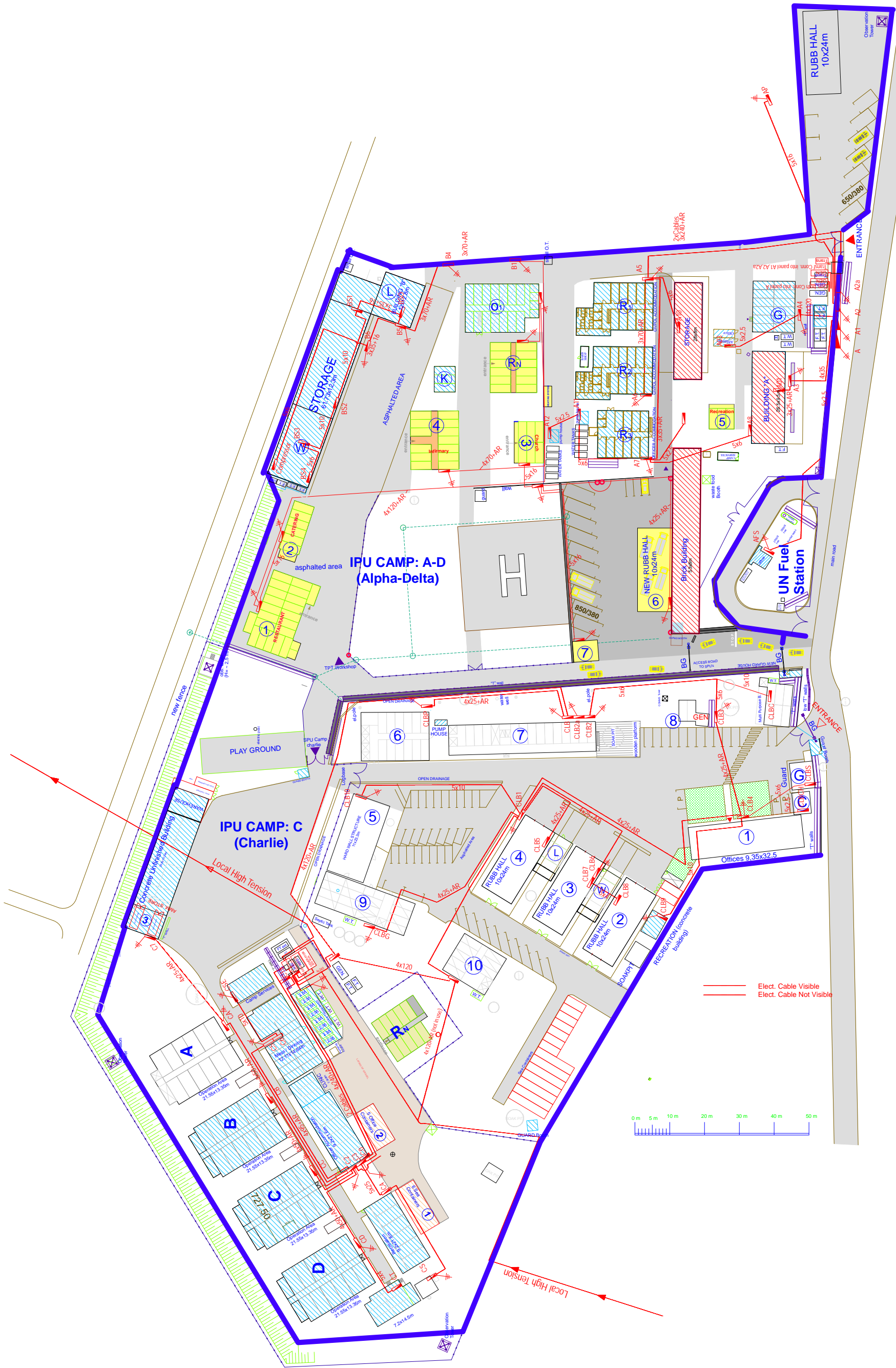
PROJECT:	Eulex MITROVICA Camp		
DRAWING:	WATER AND SEWERAGE DETAIL		
CHECKED BY:			
DESIGNED BY:			
SCALE:	Not to scale		
UNIT	cm		
DRAWING No:	003/1		
DATE:	FEBRUARY 2010		



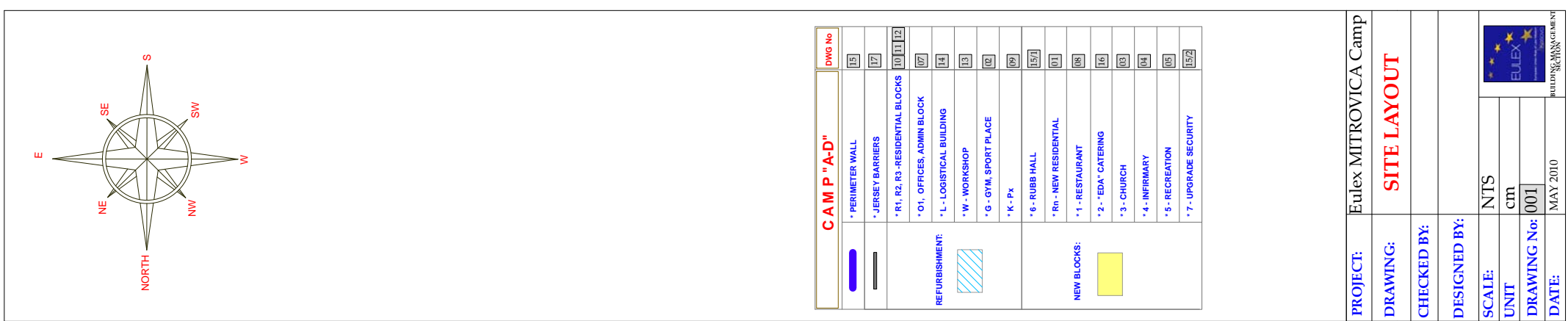


CAMP "A-D"		DWG No
	* PERIMETER WALL	15
	* JERSEY BARRIERS	17
	* R1, R2, R3 - RESIDENTIAL BLOCKS	10 11 12
	* O1, OFFICES, ADMIN BLOCK	07
	* L - LOGISTICAL BUILDING	14
	* W - WORKSHOP	13
	* G - GYM, SPORT PLACE	02
	* K - Px	09
	* 6 - RUBB HALL	15/2
	* Rn - NEW RESIDENTIAL	01
	* 1 - RESTAURANT	08
	* 2 - "EDA" CATERING	16
	* 3 - CHURCH	03
	* 4 - INFIRMARY	04
	* 5 - RECREATION	05
	* 7 - UPGRADE SECURITY	15/2

PROJECT:	Eulex MITROVICA Camp		
DRAWING:	-ELECTRICITY-		
CHECKED BY:			
DESIGNED BY:			
SCALE:	NTS		
UNIT	cm		
DRAWING No:	002		
DATE:	MAY 2010		
			
BUILDING MANAGEMENT SECTION			

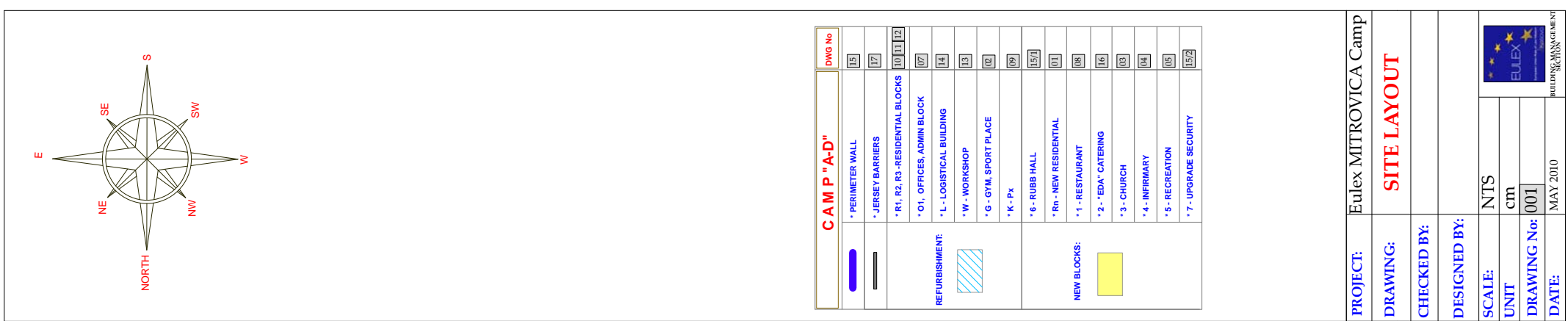


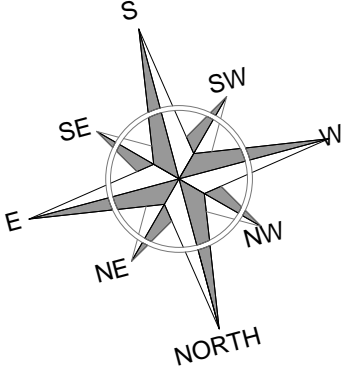
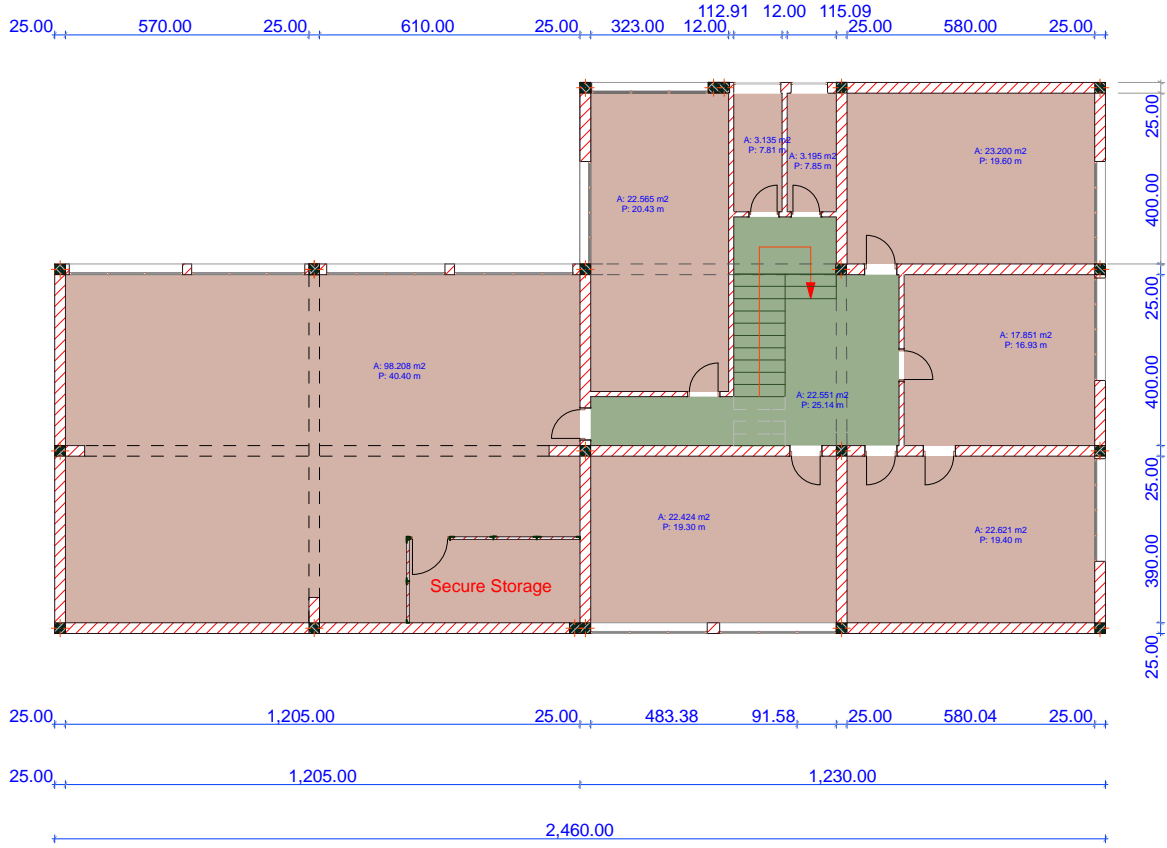
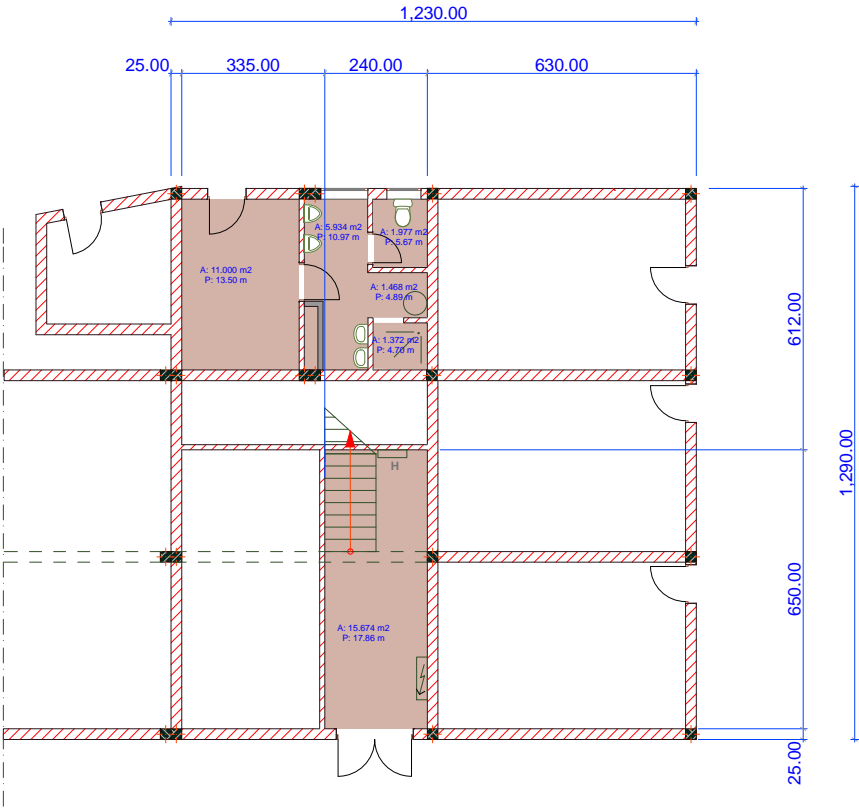
Elect. Cable Visible
Elect. Cable Not Visible



The figure is a site layout drawing for Camp A-D. At the top left, there is a compass rose indicating North (N), South (S), East (E), and West (W), with intermediate directions NE, SE, SW, and NW. The main drawing area shows a rectangular site with various buildings and blocks. A legend at the bottom left identifies symbols: a blue rectangle for 'PERIMETER WALL', a black line for 'JERSEY BARRIERS', a blue hatched rectangle for 'REFURBISHMENT', and a yellow rectangle for 'NEW BLOCKS'. The site plan includes several labeled blocks: 'R1, R2, R3 - RESIDENTIAL BLOCKS' (top right), 'O1, OFFICES, ADMIN BLOCK' (middle right), 'L - LOGISTICAL BUILDING' (middle left), 'W - WORKSHOP' (bottom left), 'G - GYM, SPORT PLACE' (bottom center), 'K - PX' (bottom right), 'Rn - RUBB HALL' (top center), 'Rn - NEW RESIDENTIAL' (middle center), 'R1 - RESTAURANT' (bottom center), 'R2 - 'EDA' CATERING' (bottom right), 'R3 - CHURCH' (bottom left), 'R4 - INFIRMARY' (bottom center), 'R5 - RECREATION' (bottom right), and 'R7 - UPGRADE SECURITY' (bottom left). A scale bar at the bottom right indicates 0, 10, 20, 30, 40, 50 meters. A north arrow is also present at the bottom right.

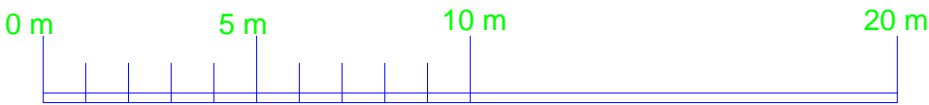
The figure is a site layout drawing for Camp A-D. At the top left, there is a compass rose indicating North (N), South (S), East (E), and West (W), with intermediate directions NE, SE, SW, and NW. The main drawing area shows a rectangular site with various buildings and blocks. A legend at the bottom left identifies symbols for the perimeter wall, jersey barriers, residential blocks (R1, R2, R3), offices/admin block, workshop, gym/sport place, kitchen, rubbish hall, new residential, restaurant, catering, church, infirmary, recreation, and upgrade security. The site plan shows a central area with several blocks, including a large central block (R1, R2, R3) and surrounding blocks (R4, R5, R6, R7, R8, R9, R10, R11, R12). A small inset map at the bottom right shows the location of the camp within a larger area.





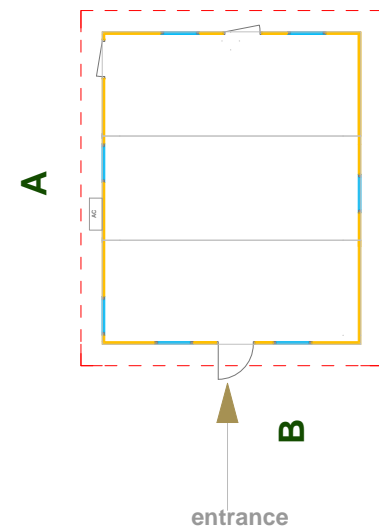
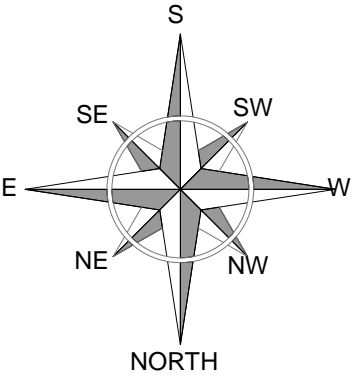
Ground Floor, "L" Logistic building

First floor, "L" Logistic building

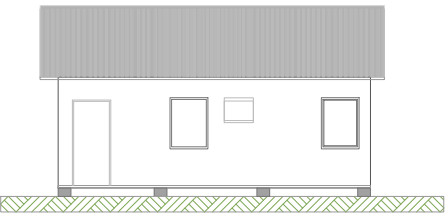


PROJECT:	Eulex MITROVICA Camp		
DRAWING:	"L" LOGISTIC		
CHECKED BY:			
DESIGNED BY:	BMS		
SCALE:	NTS		
UNIT	cm		
DRAWING No:	14		
DATE:	FEBRUARY 2010		

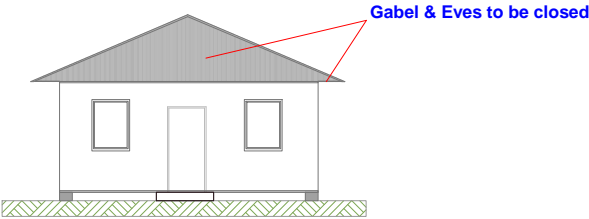




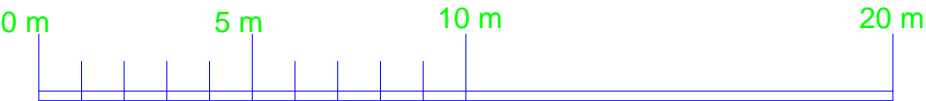
Floor Plan of "K" block, Px




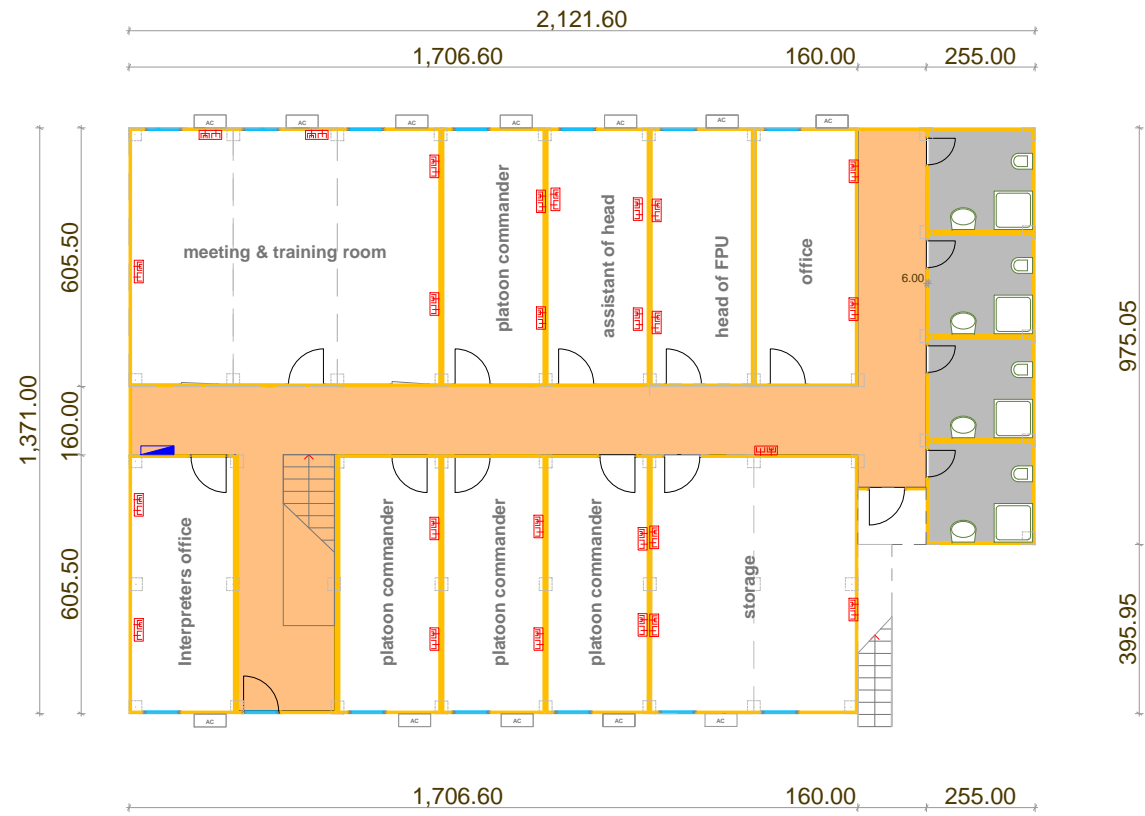
View A



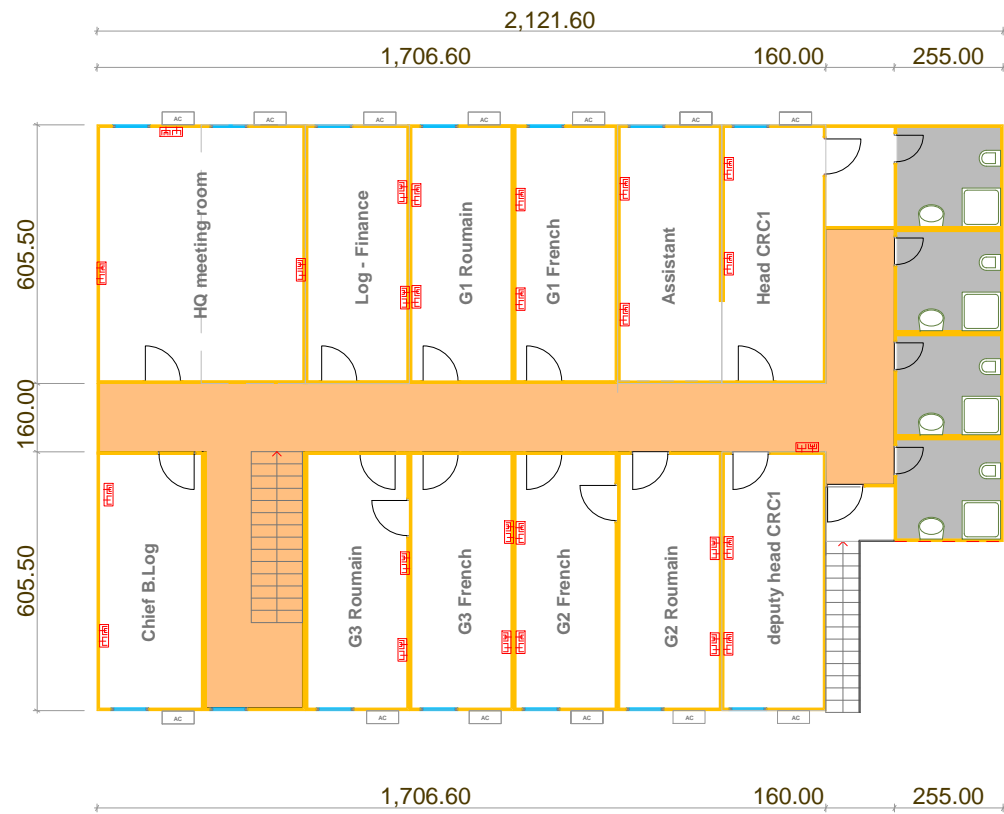
View B



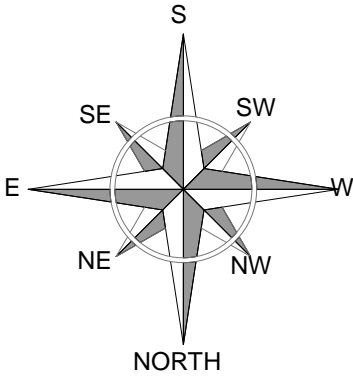
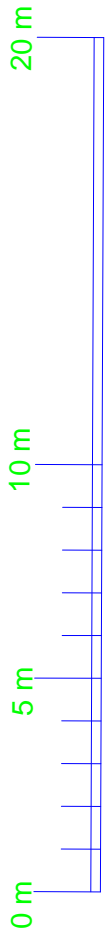
PROJECT:	Eulex MITROVICA Camp		
DRAWING:	"K" P _x		
CHECKED BY:			
DESIGNED BY:	BMS		
SCALE:	NTS		
UNIT	cm		
DRAWING No:	09		
DATE:	FEBRUARY 2010		BUILDING MANAGEMENT SECTION




Ground floor Plan O₁ block

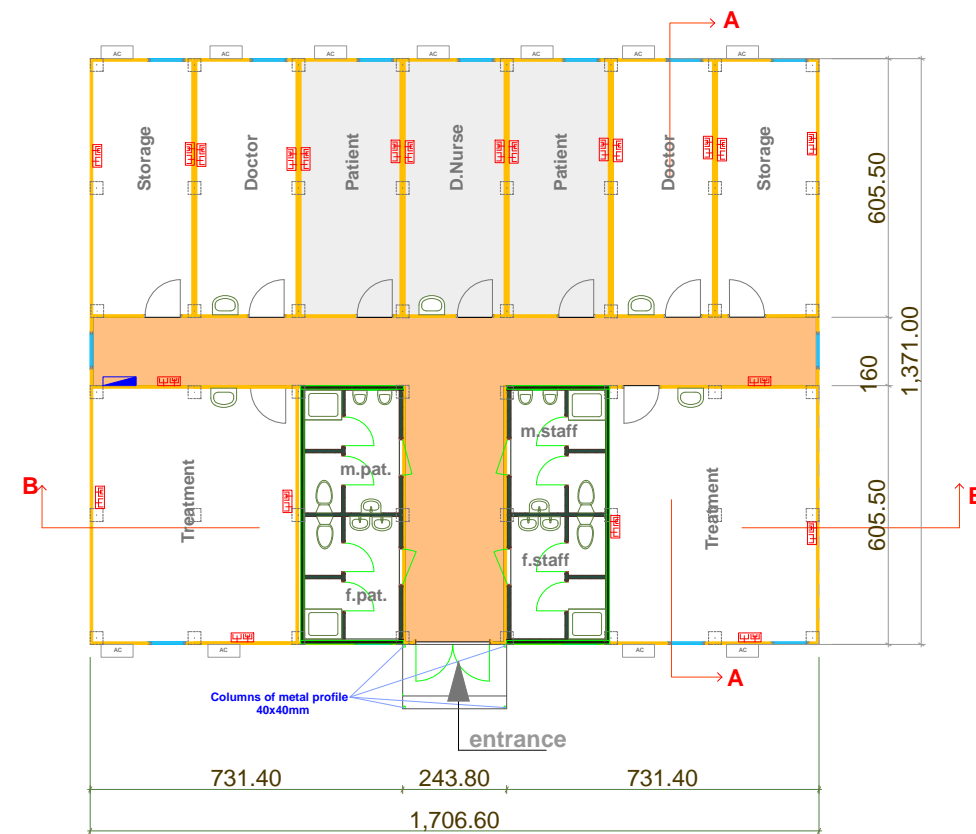


First Floor O₁ block

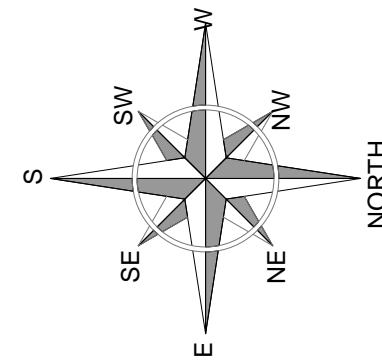


LEGEND:	
	One socket with two outlets: 1.data outlet 2.voice outlet
	IT panel


PROJECT:	Eulex MITROVICA Camp		
DRAWING:	IT - OFFICE		
CHECKED BY:			
DESIGNED BY:	BMS		
SCALE:	NTS		
UNIT	cm		
DRAWING No:	3		
DATE:	FEBRUARY 2010		
			BUILDING MANAGEMENT SECTION

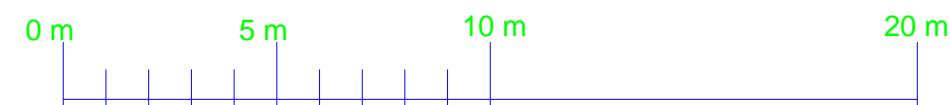


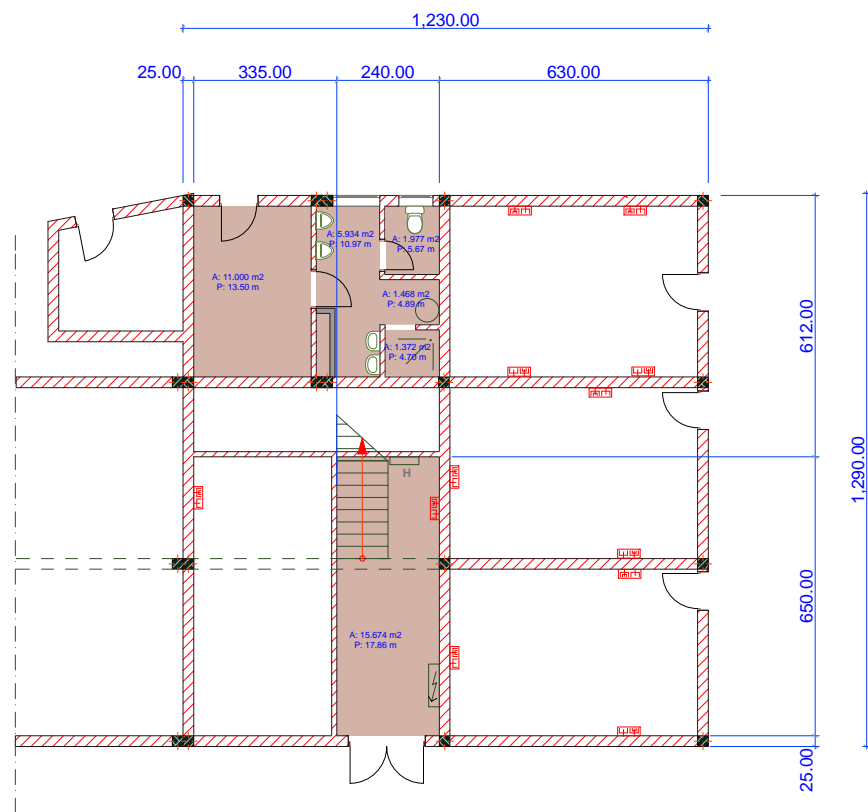
Floor Plan of Infirmary block "4"



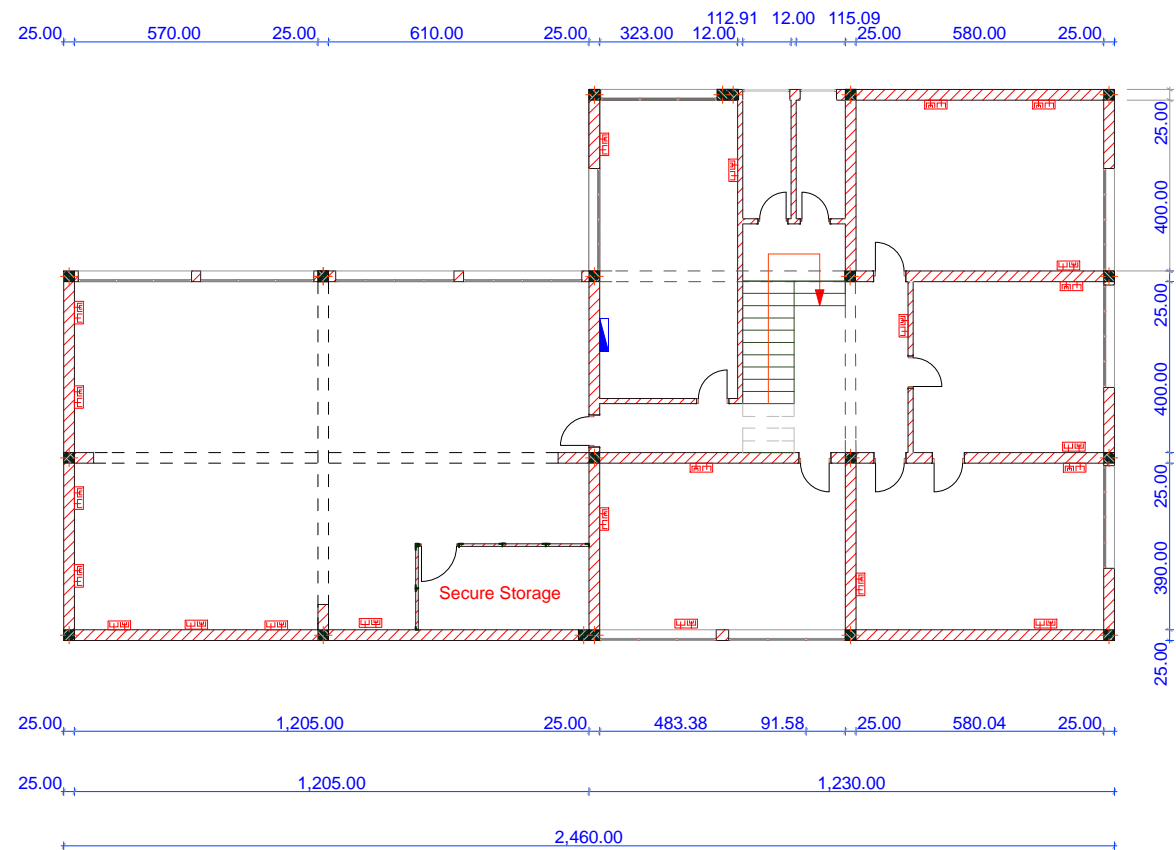
LEGEND:	
	One socket with two outlets: 1.data outlet 2.voice outlet
	IT panel

PROJECT:	Eulex MITROVICA Camp		
DRAWING:	IT - INFIRMARY		
CHECKED BY:			
DESIGNED BY:	BMS		
SCALE:	NTS		
UNIT	cm		
DRAWING No:	2		
DATE:	FEBRUARY 2010		BUILDING MANAGEMENT SECTION

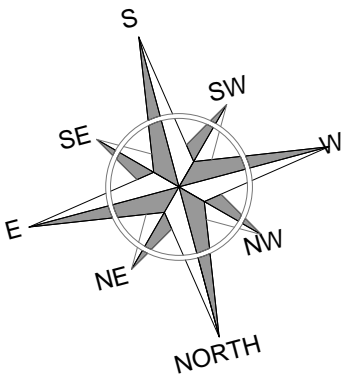
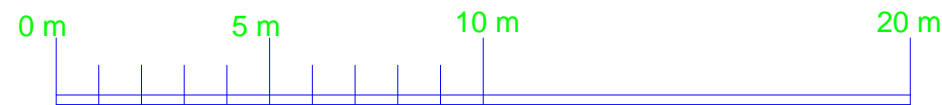





Ground Floor, "L" Logistic building



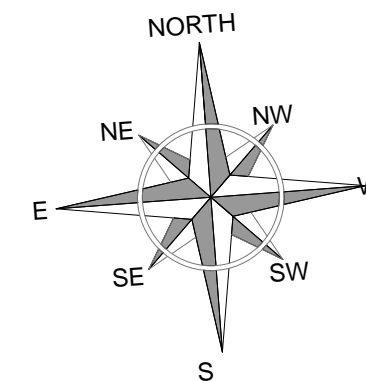
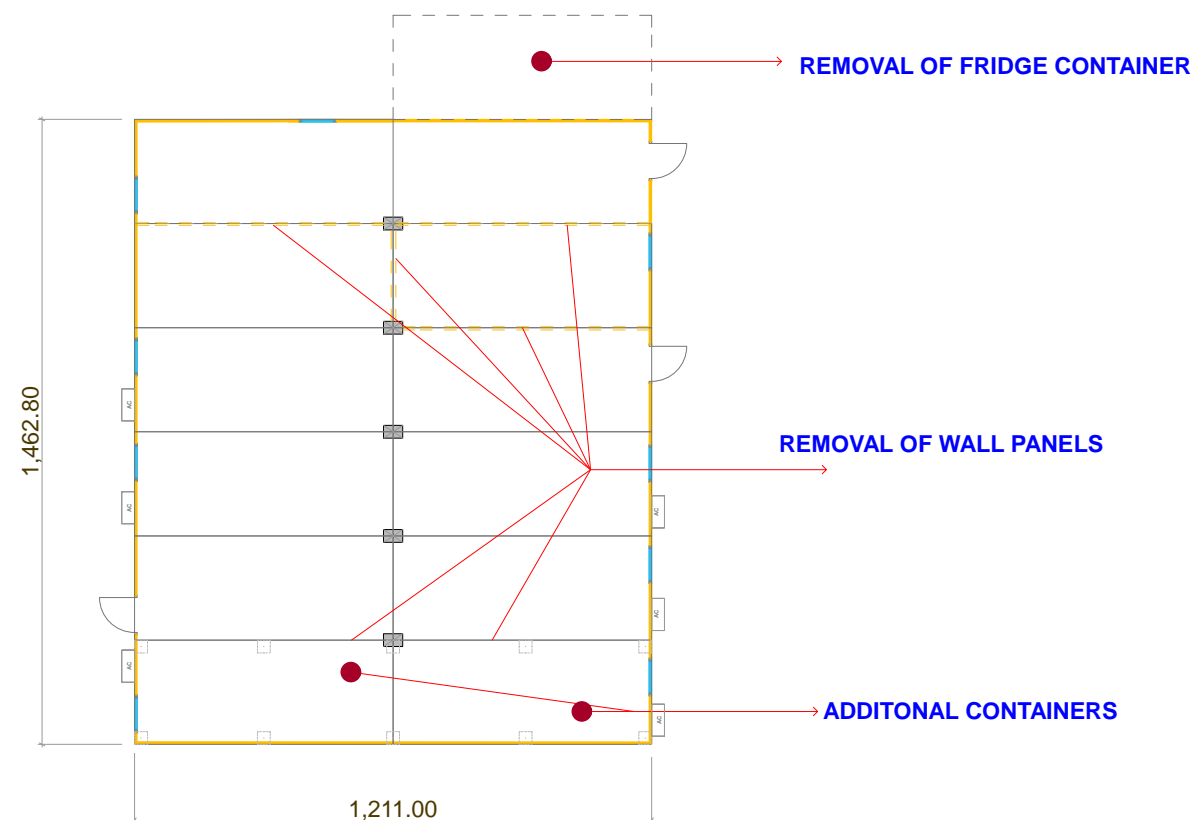
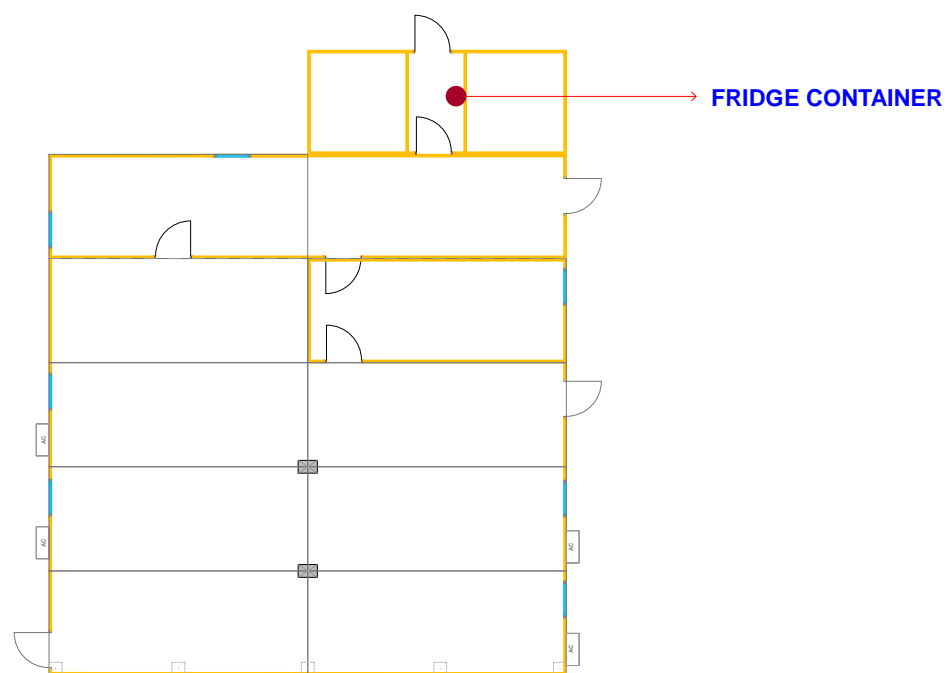
First floor, "L" Logistic building



LEGEND:	
	One socket with two outlets: 1.data outlet 2.voice outlet
	IT panel

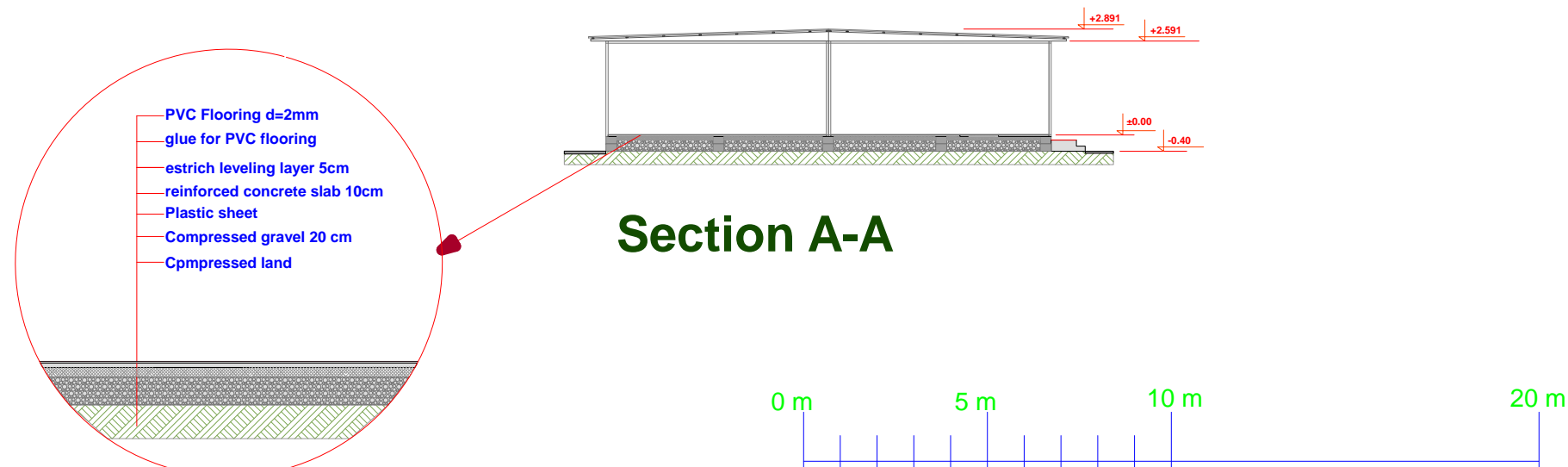
PROJECT:	Eulex MITROVICA Camp		
DRAWING:	IT- LOGISTIC		
CHECKED BY:			
DESIGNED BY:	BMS		
SCALE:	NTS		
UNIT	cm		
DRAWING No:	1		
DATE:	FEBRUARY 2010		
			BUILDING MANAGEMENT SECTION





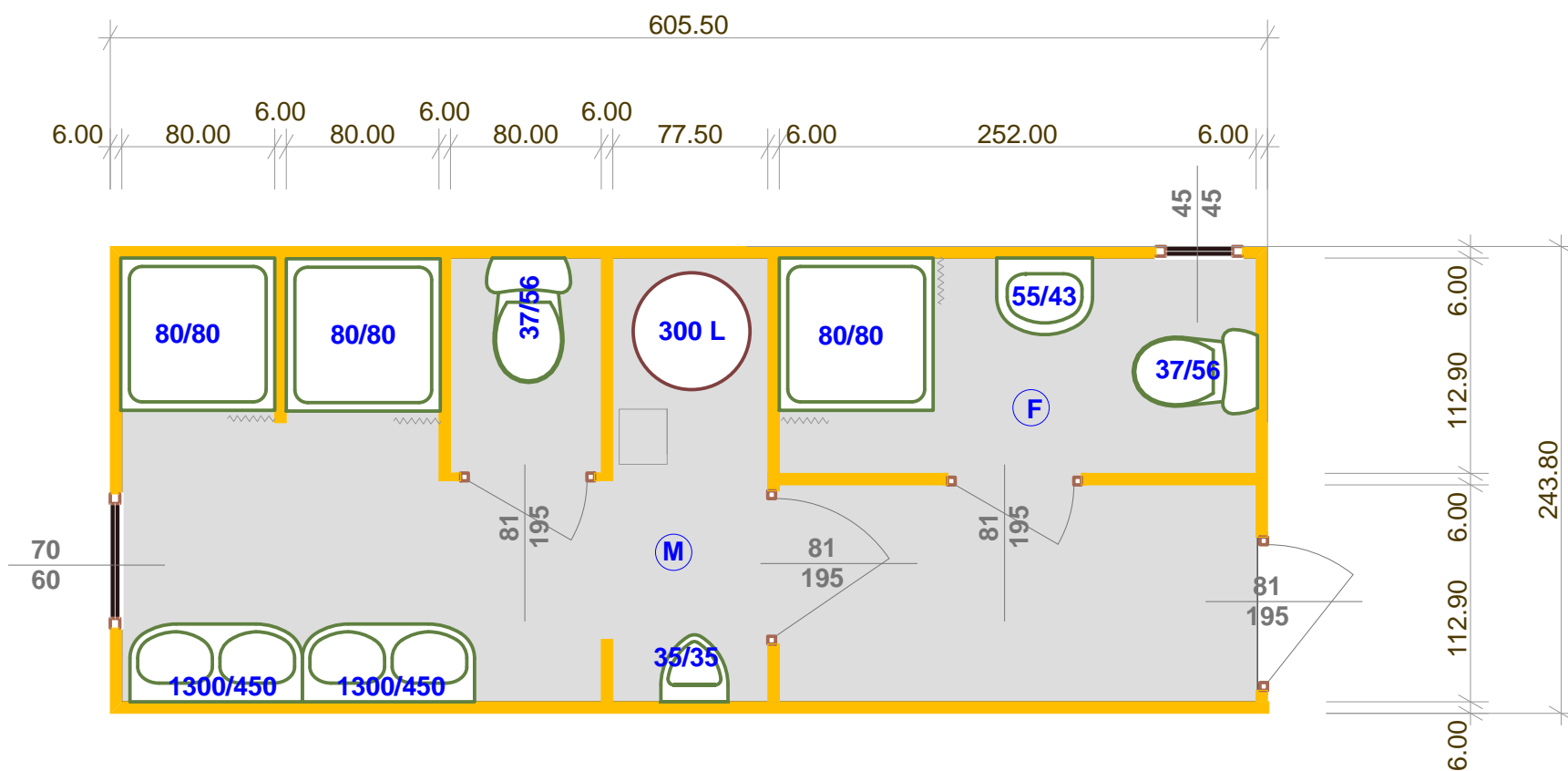
Existing Floor Plan "G" Gym block

New Floor Plan "G" Gym block



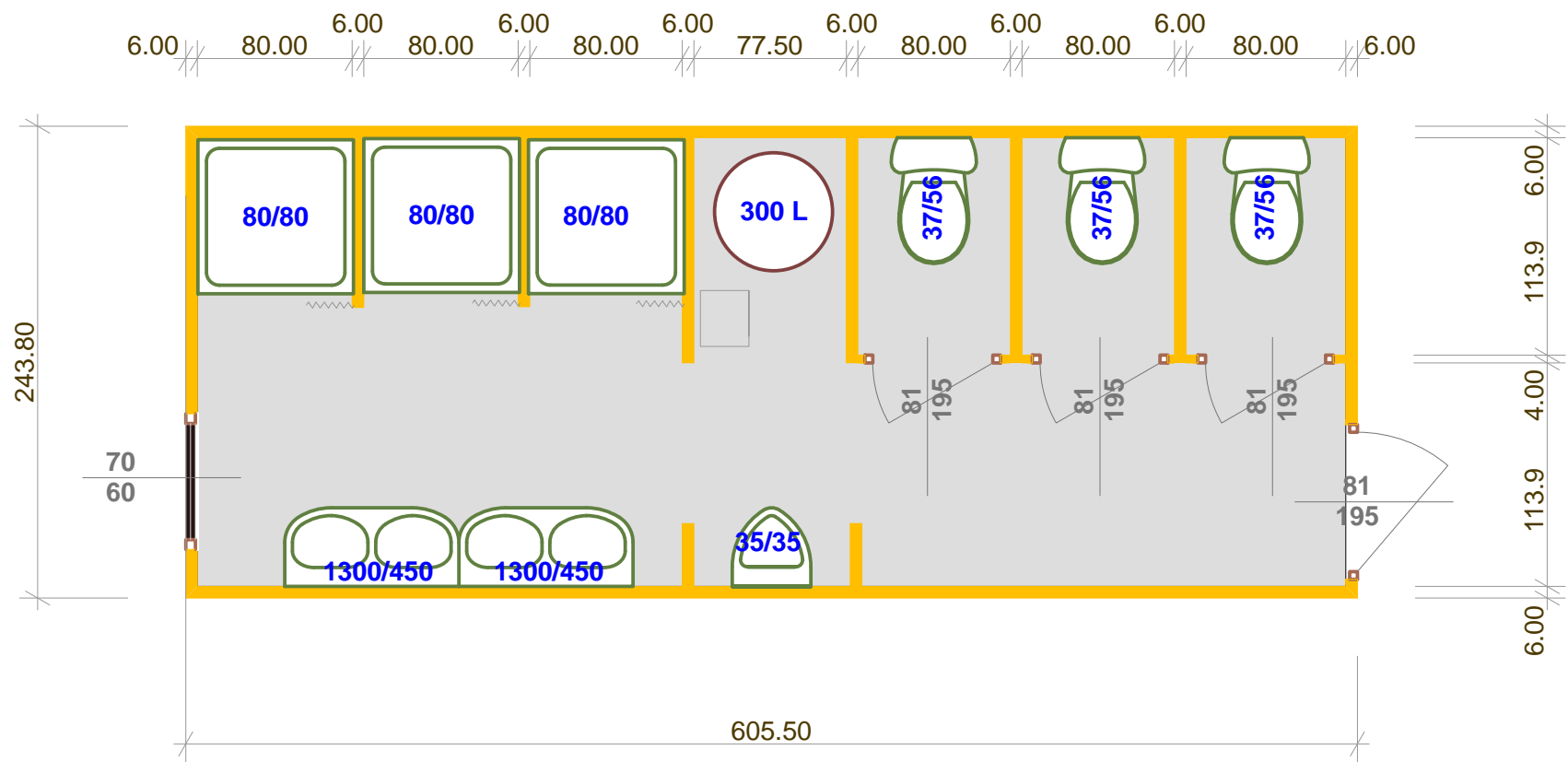
PROJECT:	Eulex MITROVICA Camp		
DRAWING:	"G" GYM		
CHECKED BY:			
DESIGNED BY:	BMS		
SCALE:	NTS		
UNIT	cm		
DRAWING No:	02		
DATE:	FEBRUARY 2010		





PROJECT:	Eulex MITROVICA Camp "C"
DRAWING:	ISO New Container Ablution Unit
CHECKED BY:	
DESIGNED BY:	BMS
SCALE:	NTS
UNIT:	cm
DRAWING No:	C/2
DATE:	FEBRUARY 2010





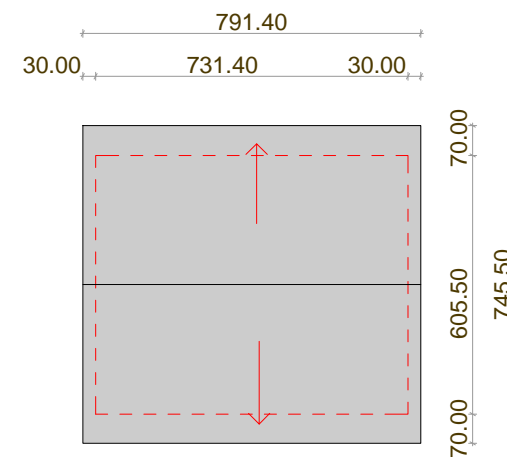
PROJECT:	Eulex MITROVICA Camp "C"
DRAWING:	ISO New Container
CHECKED BY:	Ablution Unit
DESIGNED BY:	BMS
SCALE:	NTS
UNIT:	cm
DRAWING No:	C/1
DATE:	FEBRUARY 2010



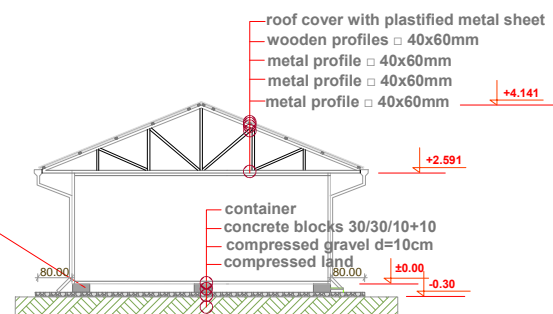
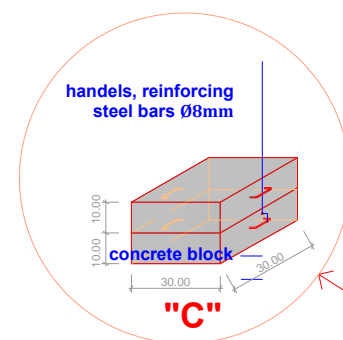
International Criminal Tribunal for the former Yugoslavia



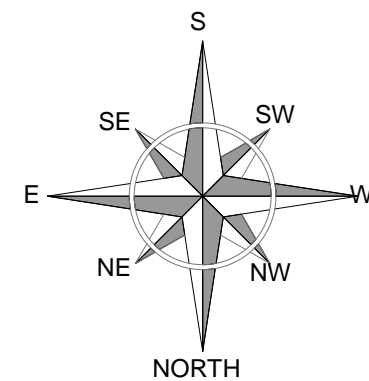
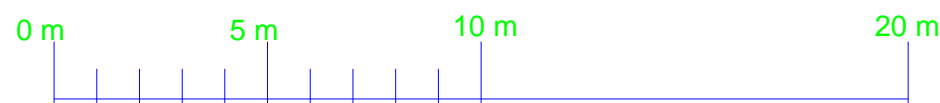
Floor Plan Security "7"




Roof plan



Section A-A



PROJECT:	Eulex MITROVICA Camp		
DRAWING:	"7" SECURITY		
CHECKED BY:			
DESIGNED BY:	BMS		
SCALE:	NTS		
UNIT	cm		
DRAWING No:	15/1		
DATE:	FEBRUARY 2010		BUILDING MANAGEMENT SECTION